

ASMH American Society for
Mohs Histotechnology

25th ANNUAL MEETING
BALTIMORE

FRIDAY, MAY 3



SATURDAY, MAY 4, 2019

FINAL PROGRAM

www.mohstech.org/annualmeeting/2019



MOHSTEK.COM
(888)-559-6647

CALIFORNIA'S FAVORITE
HISTOLOGY LAB AND
MOHS TECHNICIAN SERVICE
IS NOW CLIA CERTIFIED.

frozen.
permanent.
perfect.

OUR SERVICES:

- MOHS TECHNICIAN OUTSOURCING
- BIOPSY PREPARATION
- BIOPSY DIAGNOSIS

MOHS-TEK, INC. IS BASED IN THREE
STATES: CALIFORNIA, ARIZONA, NEVADA.
WE PRODUCE HIGH-QUALITY AND
ECONOMICAL BIOPSIES WITH ACCURATE
AND QUICK RESULTS

Table of Contents

| | |
|--|----|
| General Meeting Information | 2 |
| 2018-2019 Officer and Board Roster | 3 |
| 2018-2019 ASMH Committees | 3 |
| Welcome Messages | 6 |
| ASMH 2019 New Members | 7 |
| Program at a Glance | 10 |
| Hotel & Tourist Information | 12 |
| Baltimore Marriott Waterfront Floor Map | 13 |
| Four Seasons Hotel Baltimore Floor Map | 13 |
| Workshop Details | 16 |
| Scientific Program Schedule | |
| Friday, May 3 | 18 |
| Saturday, May 4 | 19 |
| Annual Meeting Speakers, Presenters & Supporters | 21 |
| Exhibit Hall Floor Plan | 22 |
| Exhibitor Listing | 23 |



© 2019 American Society for Mohs Histotechnology
No part of this publication may be reproduced without the prior written permission of ASMH.
Photos courtesy of Baltimore Marriott Waterfront and iStock.

American Society for Mohs Histotechnology
555 East Wells Street, Suite 1100
Milwaukee, WI 53202
Phone: (414) 918-9813
Fax: (414) 276-3349
Email: info@mohstech.org
Website: <http://www.mohstech.org>

 [facebook.com/ASMHMohs](https://www.facebook.com/ASMHMohs)

 twitter.com/ASMHMohs

 <https://www.linkedin.com/company/american-society-for-mohs-histotechnology>

General Meeting Information

On-Site Registration

The ASMH Registration Desk will be open at the Baltimore Marriott Waterfront on the following days and times (subject to change):

Wednesday, May 1: 1:00 pm – 5:00 pm

Thursday, May 2: 6:30 am – 5:00 pm

Friday, May 3: 6:30 am – 5:00 pm

Saturday, May 4: 6:30 am – 4:00 pm

Contact Hours

The National Society for Histotechnology (NSH) approved the ASMH 25th Annual Meeting for Continuing Education Unit Contact Hours. Meeting attendees are responsible for signing in on the Attendance Record form at the Registration Desk, as well as tracking their session attendance and reporting it directly to the NSH for contact hour credit. There is no fee for this service. Visit ce.nsh.org to access the contact hour portal. Additional information regarding the portal may be found on the Contact Hour Tracking Sheet in your registration packet. NSH can be reached at (443) 535-4060 or histo@nsh.org.

Certificate of Participation

ASMH certificates will be available through the Annual Meeting mobile app. Visit www.eventmobi.com/asmh19 and choose **Documents** for additional information and instructions for certificate retrieval.

Use of Mobile Devices

Please ensure that mobile phones, pagers or other electronic devices are silenced or turned off during all sessions.

Lost & Found

Please notify staff at the ASMH Registration Desk if you have lost or found an item during the course of the meeting.

Special Needs

The ASMH wishes to ensure that no individual with a disability is excluded, denied services, segregated, or otherwise treated differently than other individuals because of auxiliary aids and/or service(s). If you need an auxiliary aid or service(s) identified in the Americans with Disabilities Act, or if you have any health issues for which you may require special accommodations or assistance, please notify the ASMH staff at the Registration Desk.

Photography and Recording Policy

Photography or video or audio recording of sessions, materials presented in session, or exhibits without express written permission from the ASMH is strictly prohibited. Any photos, video or audio taken by or on behalf of the ASMH of the meeting activities and attendees shall be property of the ASMH.

There will be a professional photographer onsite documenting the meeting and social events. By attending the meeting, you agree to be photographed. Photos may be used in future promotional materials, ASMH publications, websites and social media, or other formats controlled by the ASMH.

Restriction on Minors

Children under 18 years of age are NOT permitted to enter the Exhibit Hall at any time during the meeting. This restriction includes installation, exhibition and dismantling hours. If children are present, they will be required to leave the Hall immediately.

Special Events

Thursday, May 2

Product Theater Luncheon

Baltimore Marriott Waterfront
Harborside Ballroom, Salon B

12:00 - 1:00 pm

Cutaneous squamous cell carcinoma (CSCC) is one of the most common cancers worldwide and continues to increase in incidence. Advanced CSCC can be particularly aggressive and has historically had limited treatment options. Come learn about the first and only FDA-approved treatment option for your patients with advanced cutaneous squamous cell carcinoma. This program will cover the mechanism of action, clinical efficacy and safety data, patient eligibility, dosage and administration, and patient support resources for a PD-1 inhibitor approved for patients with metastatic CSCC or locally advanced CSCC that are not candidates for curative surgery or curative radiation.

Friday, May 3

Networking Reception

Baltimore Marriott Waterfront
Harborside Ballroom/Level 4

A networking reception will take place from 5:00 – 6:30 pm in the Exhibit Hall. Light hors d'oeuvres will be served, along with beer, wine, and soda. Please join us to meet and network with fellow attendees and exhibitors.

Saturday, May 4

Annual Business Meeting (ASMH Members Only)

The Four Seasons: Grand Ballroom/Level 2

The ASMH 2019 Annual Business Meeting will be held at 9:00 - 10:00 am. Breakfast will be provided.

25th Anniversary Celebration

The Raven

Baltimore Inner Harbor/Pier 5

6:30 - 9:00 pm

This year marks the 25th Annual Meeting for ASMH, and to commemorate this milestone, ASMH is throwing an evening party aboard the Raven in Baltimore's Inner Harbor! After a busy, Annual Meeting, don't miss the opportunity to relax and connect with colleagues while enjoying live music and hors d'oeuvres before heading home. Hope to see you there!

2018-2019 Officers and Board Members

President

M. Maureen Gagnot, HT (ASCP)

Vice President

Daniel H. Gong, MS, MSO, C-PM

Secretary-Treasurer

Rodney K. Barber, HT

Past President

Linda R. Cesario, DPM, HT (ASCP)

Board of Directors

Kathi McAdoo

Marilyn McCulloch, CLT

Lindsey E. Riggs, HTL

ACMS Representative

Shari Ochoa, MD, MS, FACMS

2018-2019 Committees

Program Committee

Angelic R. Maden, HT (ASCP)^{cm}, Chair

Lindsey E. Riggs, HTL, Chair

M. Maureen Gagnot, HT (ASCP)

Daniel H. Gong, MS, MSO, C-PM

Kathi McAdoo

Robert L. Milewski, HT

Robin M. Seaver, MLT/HT (ASCP)^{cm}

Robert Tagliaferro, HT, (ASCP)^{cm}

Jeanie Wade, HT (ASCP)

Mohs Technician Training Committee

Linda R. Cesario, DPM, HT (ASCP), Chair

Daniel H. Gong, MS, MSO, C-PM, Co-Chair

Mohs Tech Trainers:

Norma L. Anderson, HT (ASCP)

Rodney K. Barber, HT

Joyce L. Bidwell, MA

Patricia A. Brunelle, HT

Linda R. Cesario, DPM, HT (ASCP)

Susan L. Cushing

Daniel H. Gong, MS

Marci L. Lorio, RMA

Reginald M. Manney, HT

Marilyn McCulloch, CLT

Stephanie S. Petrow, HT

Ana I. Santos, CMA

Thomas E. Sturm, HT (ASCP)

Toni G. Tedrick, RMA

Lynn Whitmore, HT (ASCP)

Professional Headshots

Available FREE to all meeting attendees (optional). On Saturday, May 4 from 12:00 – 2:00 pm in the Exhibit Hall, professional headshots will be taken by our photographer. All photos will be taken on a first-come, first-served basis until 2:00 pm.

WiFi Connection Instructions

To access the Internet in meeting spaces:

1. Go to the wireless settings on your device.
2. Select the network SSID “Mohs2019” and connect.
 - If you are using a mobile device, a portal page will open automatically in your web browser. If you are using a laptop, you may need to launch a browser for the portal page to appear.
3. On the portal page, enter the access code “fredmohs” to log in.

NOTE: The complimentary wireless service available in guest rooms uses a different network SSID and access code than noted above for the meeting spaces.



Whitelist info@mohscollege.org

To ensure you receive important communications from the ACMS including information regarding the Annual Meeting, messages from the President, the Membership Bulletin, member surveys and more, add info@mohscollege.org to the Safe Senders list in your email account. If you think you may not have received messages from the ACMS, check your Spam or Junk Mail folder and ‘whitelist’ info@mohscollege.org right away!



Headed to the Four Seasons?



All ASMH General Sessions will be held at the Four Seasons Hotel Baltimore.

THE MARKET LEADER IN CRYOTOMY

PROVIDING THE COMPLETE MOHS SOLUTION



The CM1520 Cryostat delivers high-quality sections the fast, simple and efficient way.

Stop by booth 329 to learn how the quick freezing shelf and powerful refrigeration system combine to deliver rapid results.

Experience the Leica Biosystems difference with the CM1520.



LeicaBiosystems.com

Copyright © 2019 Leica Biosystems Richmond, Inc. All Rights Reserved. LEICA and the Leica logo are registered trademarks of Leica Microsystems III GmbH.

190256 Rev A 3/2019

Leica
BIOSYSTEMS

Advancing Cancer Diagnostics
Improving Lives



George Tiemann & Co.

Surgical Instruments • Since 1826

Supercut Tungsten Carbide Scissors

The Tiemann Supercut Tungsten Carbide Scissors combine the hardness of the Tungsten Carbide and the sharpness of the Supercut scissors.



105-0930

Zitelli Supercut & Tungsten Carbide, curved, delicate, sharp tips, serrated edge 4 1/2"

105-0931

Zitelli Supercut & Tungsten Carbide, straight, delicate, sharp tips, serrated edge 4 1/2"



105-407SC-TC

Iris Supercut & Tungsten Carbide, serrated edge, 4 1/2" curved

105-540SC-TC

Supercut & Tungsten Carbide Baby Metz, curved, serrated 4 1/2"



105-580SC-TC

Supercut & Tungsten Carbide, Stevens Tenotomy, curved, blunt 4 1/2"

"These scissors are like Goldilocks - not too big not too small - just right! I like sharp tips to initiate undermining. I like straight blades to undermine and elevate even thickness flaps. I like the strong blades that can handle scar tissue, yet small enough for fine work. Finally, I like how they are sharp and stay sharp."

- John Zitelli, M.D.

ph (800) 843-6266 • www.georgetiemann.com • fx (800) 577-6050

Welcome from the President

Dear Colleagues,

On behalf of the Board of Directors, I welcome you to Baltimore! It is here at the Marriott Waterfront, we celebrate the 25th year of ASMH. I'd like to extend a warm welcome to all our new members, as well as our returning members.

For convenient access to our program, ASMH will be using the Annual Meeting mobile app that is optimized for all devices. Make sure to download the app to view our schedule, speakers, exhibitors, event information, documents and evaluations.

I'd like to acknowledge our Program Committee Chair, Angel Maden and Co-Chair, Lindsey Riggs. The Scientific Program Committee has worked hard to provide once again an outstanding and comprehensive program which appeals to all levels of Mohs technical experience. Much gratitude goes to the numerous volunteers who eagerly have jumped in to help wherever they are needed. Everyone has done an outstanding job! My sincere thanks to Mary Randall, our Executive Director and the rest of the staff at Executive Director Inc., whose extensive planning and organizing make this annual event possible.

In addition to the educational knowledge and technical experience we take away from these conferences, we also have the opportunity to network and connect with one another. Don't miss the ever popular networking reception which will be held on Friday evening in the Exhibit Hall. Be sure to take the opportunity to visit vendors, see the latest ideas, devices or services that may benefit your practice or your lab. Many thanks to our vendors who make this evening possible! Also, all current members are encouraged to attend the Saturday Breakfast Business Meeting for the year in review.

In a short 25 year period, this small society has made great strides. The momentum is palpable as we continue to move forward. Every member is to be celebrated! Join each other for an evening of fun, food and cocktails on a celebratory river boat cruise aboard The Raven in Baltimore's Inner Harbor on Saturday, May 4th.

Happy Anniversary ASMH! Enjoy the meeting! Enjoy Baltimore!

Sincerely,

Mo Gagnot, HT (ASCP)
President, ASMH
President@mohstech.org



Welcome from the Program Chairs

Welcome to the 25th Annual Meeting of the ASMH in Baltimore, Maryland. If you are a new member, first time attendee or guest, we are so glad you are here! To established members, we are happy you are here to celebrate our 25th meeting!

This is a milestone for our society. It is a testament to your commitment to professionalism and education. We have a full schedule of workshops and presentations to inform multiple levels of Mohs histology professionals. Please remember to complete the feedback surveys as these help guide our planning for next year's sessions.

Fun and networking is on the schedule too! We look forward to meeting as many of you as possible. This society provides many opportunities for volunteering and service to our profession.

Angel R. Maden, MS, HT (ASCP)^{CM}, Chair
Lindsey Riggs, HTL, Co-Chair



*Angel R Maden, MS,
HT (ASCP)^{CM}, Chair*



*Lindsey Riggs, HTL,
Co-Chair*

Welcome to our New Members

As of April 1, 2019

Amanda Alba, CST
Gabriele Albrecht
Emily K. Anderson
Christopher Ang
Marta Ashurov
Kristy Austin
Kathleen M. Baecke
Jennifer L. Bailey, LPN
Lukas P. Banevicius, HT
Renee Barela
Parsa Behnia
Rachael L. Bowers
Annetta J. Burnett, HT (ASCP)
Linda A. Callahan, HT (ASCP)
Patrick Carroll
Abbie M. Casey, MA
Anne Chapas
Ashley Ciotti
Christina M. Daniels
Greg W. Dischner
Jordan Duffy
Tara A. Dunn

Jonathan W. Edmondson, BS, HTL
(ASCP)cm
Chloe Elliott, BS
Tera Finley
Priscilla A. Gonzalez
Rebeca Hernandez Rangel
Lela R. Hilton
Keely C. Hohenberger
Colleen Holigan
Lisa Hoxie
Amanda J. Isenor
Carlie M. Ivancic, HT
Brandy L. Jackson
Joy E. Jackson
Shelbie Johnson
Mallory E. Keating
Brooke Ketzler
Azeddine Khechmoune
Jessica B. Kosmosky, CMA
Jamie L. Kusnerak
David I. Latoni Morales
Carla Leary

Tiffany Leggio
Savanna A. Locke
Addison L. Losornio
Ann E. Lowder, HT
Melissa Malfavon, CST
Mary Grace Manalo, RN
Gil Genna G. Manuel, HT
Debbie Mayer
Christine McAvoy, HTL
Kimberley L. Miller
Dystany D. Mitchell
Cody Moran
Lauro F. Mozo
Misty K. Oster, CMA
Ashley Peoples
Bettina D. Peterson, HT (ASCP)
Margaret Phillips
Rebecca L. Plevelich
Raelene S. Pocaigue, CMA
Matthew J. Poltack
Brandon W. Possum, HT
Vicky D. Prigg, HTL

Aron Raklyar
Cynthia Ramirez
Suman Rani
Malory J. Rodabaugh
Meredith Rowe
Diane L. Schneider, HT (ASCP)
Rebecca L. Serakowski, RMA
Teresa Jillian Smith, LPN
Jessica Snyder
Lucia Solano
Nicole Spak
Jenny Spinks
Bonnie Swayze
Jason D. Tanck
Michelle Tate
Samantha Thirtyacre
Jonathan G. Torres
Stephanie L. Upky
Megan Walker
Edward D. Warren
Amanda G. Williams, HT (ASCP)
Tonya K. Woodard, HT

Please join us for a presentation on



DATE Thursday, May 2, 2019

TIME 12:00-1:00 PM

LOCATION Baltimore Marriott Waterfront
Salon B in Harborside Ballroom



Jae Yeon Jung, MD, PhD

*Sponsored by
Regeneron Pharmaceuticals and Sanofi Genzyme*

Visit booth 102 to learn more.

REGENERON | SANOFI GENZYME 

© 2019 Regeneron Pharmaceuticals, Inc., and sanofi-aventis U.S. LLC. All rights reserved. US-LIB-1508 03/19



Cut and stain perfect frozen sections

Buy a Tissue-Tek® Cryo₃® Flex Cryostat, Mohs and a Histo-Tek® Mini Stainer plus consumables for only \$25,000.00!

Enjoy the first and only cryostat with a Winged Chuck optimized for Mohs surgery. The Histo-Tek Mini Stainer is a perfect complement to the Tissue-Tek Cryo₃ Flex Cryostat, Mohs for fast, reproducible and high quality slides.

Visit Sakura Finetek at booth 217 for more details.

continuous innovation for pathology



0008371-01 Rev. B

Do you know where your patients go when they leave your office?

We do.

They come to The Skin Cancer Foundation. Every day, 40,000 people visit our website to learn more about their skin cancer. These are the patients that you just met with, and the ones you will meet tomorrow.

Visit booth #313 to learn what we do and how you can help.

Questions? Contact Brian Hanley
bhanley@skincancer.org | 646.583.7988

 SkinCancer.org
 /SkinCancerFoundation
  @SkinCancerOrg

PROUD PARTNER OF
 American College
of Mohs Surgery


40
YEARS OF
SERVICE

Get the Meeting App!

www.eventmobi.com/app/asmh19

The Annual Meeting app is optimized for all devices—phones, tablets and laptops—across mobile platforms like iOS, Android and Windows. Get real-time notifications, download handouts, complete session evaluations, and sign in to create a custom schedule, save notes, or connect with colleagues.

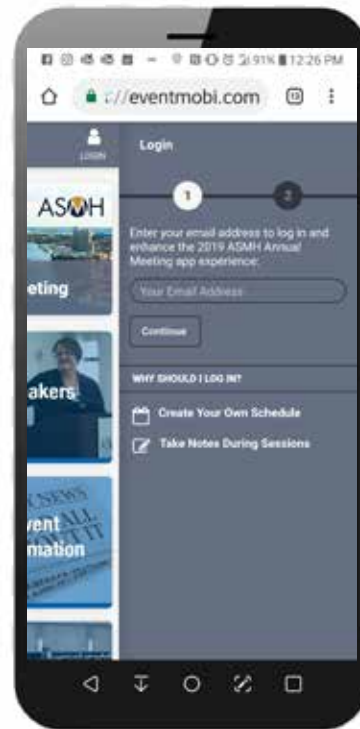
1. visit www.eventmobi.com/app/asmh19
Tap “Get the App” button. The app will automatically download from your app store and launch the event.

2. Tap Login at upper right. Enter the email address you used to register for the meeting; this allows full use of all features.



NOTE: EventMobi's orange 'E' icon will appear on your home screen; use this to access the app throughout the meeting.

If you choose to view the app in a web browser, follow the on-screen prompts to add the app icon to your home screen. Bookmark and return to www.eventmobi.com/asmh19.



Features



Tap a session for description, time, location, speakers, handouts & more



View listing and find sessions by speaker



View a listing of exhibitors by category or booth location



WiFi instructions, special event details, & more



Complete session and end-of-meeting evaluations quickly and seamlessly



Find colleagues, edit your profile, connect via 1-1 or group chat



Handouts, slide decks & other information shared by speakers



Hotel, meeting space & Exhibit Hall floor plans



Share your experience via social media

Program at a Glance

| Wednesday, May 1 | | |
|-------------------------|---|---|
| 1:00 – 5:00 pm | Meeting Registration/Information Desk Open | Marriott: Harborside Registration/Level 4 |
| Thursday, May 2 | | |
| 6:30 am – 5:00 pm | Meeting Registration/Information Desk Open | Marriott: Harborside Registration/Level 4 |
| 7:30 – 9:00 am | Yoga | Marriott: Poolside Deck/Level 5 |
| 7:30 – 9:00 am | IHC Phase I: Where Do I Begin? | Marriott: Kent A/Level 4 |
| 7:30 – 9:00 am | Beginner Cryostat | Marriott: Laurel C-D/Level 4 |
| 9:15 – 10:45 am | IHC Phase II: The Technique of Immunohistochemistry | Marriott: Kent A/Level 4 |
| 9:15 – 10:45 am | Intermediate Cryostat | Marriott: Laurel A-B/Level 4 |
| 9:15 – 10:45 am | Implementing Procedure and Document Control in the Mohs Lab | Marriott: Kent B/Level 4 |
| 9:15 – 11:45 am | Tipping Your Cap for CAP: Tips on How to Make Inspections Go Smoothly | Marriott: Kent C/Level 4 |
| 9:30 am – 7:30 pm | Exhibit Hall Open | Marriott: Harborside Ballroom/Level 4 |
| 11:45 am – 12:45 pm | Lunch | Marriott: Laurel Pre-Function Space/ Level 4 |
| 12:45 – 3:15 pm | IHC Phase III: Immunohistochemistry Theory and Details for the IHC Lab | Marriott: Kent A/Level 4 |
| 12:45 – 3:15 pm | The A to Z of Mohs Procedures: Technical Guidance on Potential Pitfalls | Marriott: Kent B/Level 4 |
| 12:45 – 3:15 pm | CLIA: What You Need to Know | Marriott: Kent C/Level 4 |
| 3:30 – 5:00 pm | Building a Budget for the Mohs Lab | Marriott: Kent B/Level 4 |
| 3:30 – 5:00 pm | Theory and Procedures for Routine Staining of Mohs Slides | Marriott: Kent C/Level 4 |
| 3:30 – 5:00 pm | Advanced Cryostat | Marriott: Laurel A-B/Level 4 |
| Friday, May 3 | | |
| 6:30 am – 5:00 pm | Meeting Registration/Information | Marriott: Harborside Registration/Level 4 |
| 7:00 – 7:30 am | Continental Breakfast | Four Seasons: Grand Ballroom/Level 2 |
| 7:30 am – 9:45 am | General Session 1 | Four Seasons: Grand Ballroom/Level 2 |
| 7:30 am | Welcome and Opening Remarks <i>M. Maureen Gagnot, HT (ASCP), ASMH President</i> | Four Seasons: Grand Ballroom/Level 2 |
| 7:45 am | Fundamentals for Everyone <i>Kurt Hemmings</i> | Four Seasons: Grand Ballroom/Level 2 |
| 8:15 am | Cutaneous Oncology: Why We Do What We Do <i>Valencia D. Thomas, MD, FACMS</i> | Four Seasons: Grand Ballroom/Level 2 |
| 8:45 am | Ergonomics in the Laboratory <i>Allison Eck, HTL (ASCP)^{cm}, QLS, AHI, Doylestown Hospital</i> | Four Seasons: Grand Ballroom/Level 2 |
| 9:45 – 10:00 am | Break | Four Seasons: Grand Ballroom/Level 2 |
| 10:00 am – 12:00 pm | General Session 2 | Four Seasons: Grand Ballroom/Level 2 |
| 10:00 am | Safety in the Histology and Mohs Lab: Beyond Universal Precautions <i>Barbara S. Beck, HT/HTL (ASCP)</i> | Four Seasons: Grand Ballroom/Level 2 |
| 10:30 am | To Mohs or Not to Mohs <i>Shari Ochoa, MD, MS, FACMS</i> | Four Seasons: Grand Ballroom/Level 2 |
| 11:00 am | Troubleshooting Open Forum <i>Angelic R. Maden, HT (ASCP)^{cm}; Lindsey E. Riggs, HTL</i> Drop off questions at the Registration Desk | Four Seasons: Grand Ballroom/Level 2 |
| 11:30 am – 6:30 pm | Exhibit Hall Open | Marriott: Harborside Ballroom/Level 4 |
| 12:00 – 1:00 pm | Lunch | Marriott: Harborside Ballroom/Level 4 |

Program at a Glance

| Friday, May 3, continued | | |
|---------------------------------|--|---|
| 1:00 pm – 3:30 pm | General Session 3 | Four Seasons: Grand Ballroom/Level 2 |
| 1:00 pm | Large or Small, the Mohs Lab Does it All. Private, Hospital and Corporate: How Do We Differ? <i>Angelic R. Maden, HT (ASCP)^{cm}; Lindsey E. Riggs, HTL; Jeanie Wade, HT (ASCP)</i> | Four Seasons: Grand Ballroom/Level 2 |
| 1:45 pm | The Ups and Downs of Maintaining Your Cryostat <i>James F. Kovach, Tech One Biomedical</i> | Four Seasons: Grand Ballroom/Level 2 |
| 2:30 pm | Harassment: Recognition and Avoidance <i>Billy Parsons, VP Human Resources, US Dermatology Partners</i> | Four Seasons: Grand Ballroom/Level 2 |
| 3:30 – 5:00 pm | Beginner Cryostat Workshop | Marriott: Laurel C-D/Level 4 |
| 3:30 – 5:00 pm | Advanced Cryostat Workshop | Marriott: Laurel A-B/Level 4 |
| 3:30 – 5:00 pm | Workshop – IHC Phase I: Where Do I Begin? | Marriott: Kent A/Level 4 |
| 5:00 – 6:30 pm | Networking Reception | Marriott: Harborside Ballroom/Level 4 |
| Saturday, May 4 | | |
| 6:30 am – 4:00 pm | Meeting Registration/Information Desk Open | Marriott: Harborside Registration/Level 4 |
| 7:00 – 8:30 am | Advanced Cryostat Workshop | Marriott: Laurel A-B/Level 4 |
| 7:00 – 8:30 am | Workshop – IHC Phase II: The Technique of Immunohistochemistry | Marriott: Kent A/Level 4 |
| 8:00 – 2:00 pm | Exhibit Hall Open | Marriott: Harborside Ballroom/Level 4 |
| 9:00 – 10:00 am | ASMH Business Breakfast Meeting Members only | Four Seasons: Grand Ballroom/Level 2 |
| 10:00 am – 12:00 pm | General Session 4 | Four Seasons: Grand Ballroom/Level 2 |
| 10:00 am | ASMH: We Have Come So Far, With Boundless Opportunities for the Future <i>Kimberly R. Brock, BS, HT (ASCP); M. Maureen Gagnot, HT (ASCP); Daniel H. Gong, MS, MSO, C-PM</i> | Four Seasons: Grand Ballroom/Level 2 |
| 10:30 am | Artifact or Fiction: Recognizing H&E Patterns of Processing Errors <i>Bryan Carroll, MD, PhD, FACMS</i> | Four Seasons: Grand Ballroom/Level 2 |
| 11:00 am | Troubleshooting Open Forum <i>Angelic R. Maden, HT (ASCP)^{cm}; Lindsey E. Riggs, HTL</i> Drop off questions at the Registration Desk | Four Seasons: Grand Ballroom/Level 2 |
| 12:00 – 1:00 pm | Lunch | Marriott: Harborside Ballroom/Level 4 |
| 1:00 pm – 2:15 pm | General Session 5 | Four Seasons: Grand Ballroom/Level 2 |
| 1:00 pm | Dying for a Tan: Evidence for Photocarcinogenesis <i>Guy E. Orchard, PhD, MSc, FIBMS</i> | Four Seasons: Grand Ballroom/Level 2 |
| 1:30 pm | Panel – Communication in the Lab <i>Richard S. Lewis, MD, FACMS; Lindsey E. Riggs, HTL; Tara A. Dunn; Matthew C. Fox, MD, FACMS; Leandra Turner, HT (ASCP)^{cm}</i> | Four Seasons: Grand Ballroom/Level 2 |
| 2:15 – 2:30 pm | Break | Four Seasons: Grand Ballroom/Level 2 |
| 2:30 – 4:30 pm | General Session 6 | Four Seasons: Grand Ballroom/Level 2 |
| 2:30 pm | A Cut Above the Rest: Why Quality Matters in Mohs Histotechnology <i>Jayne S. Joo, MD</i> | Four Seasons: Grand Ballroom/Level 2 |
| 3:00 pm | Whole Mount Sections <i>James O. Barlow, MD, FACMS</i> | Four Seasons: Grand Ballroom/Level 2 |
| 3:30 pm | The Flipped Tissue Method <i>Norma L. Anderson, HT (ASCP)</i> | Four Seasons: Grand Ballroom/Level 2 |
| 4:00 pm | Grossing and Embedding Less Than Ideal Specimens <i>Angelic R. Maden, HT (ASCP)^{cm}</i> | Four Seasons: Grand Ballroom/Level 2 |
| 4:30 pm | Meeting Adjourned | |

Hotel and Travel Information

Hotel & Travel Information

Baltimore Marriott Waterfront

700 Aliceanna Street, Baltimore, MD 21202

(410) 355-3000

Hotel website link available at www.mohstech.org/annualmeeting/2019

Four Seasons Hotel Baltimore

200 International Drive, Baltimore, MD 21202

(410) 576-5800

Check-in time: 3:00 pm; Check-out time: 12:00 pm

Early check-in and late check-out are subject to availability and approval.

Baltimore Marriott Waterfront Parking

Rates excluding tax (prices subject to change)

On-site parking fee \$8.50 hourly, \$26 daily / Valet: \$45.00

Four Seasons Hotel Baltimore Parking

Rates excluding tax (prices subject to change)

On-site self parking fee \$8.00 hourly, \$23 daily / Valet \$46.00

Airport & Transportation

Baltimore/Washington International Thurgood Marshall Airport (25 minutes/12 miles south)

Ronald Reagan Washington National Airport (90 minutes/46 miles south)

Washington Dulles International Airport (2 hours/62 miles southwest)

Transportation from Airports

Neither the Marriott Waterfront nor the Four Seasons provide airport shuttle service. For information on transportation options including taxi, third-party shuttle, car service or rental, rail, bus and more, please visit the Baltimore Marriott Waterfront Hotel's Map page or the BWI Transportation page at www.bwiairport.com/to-from-bwi/transportation

Baltimore Weather

During early May: Average high: 76°F; Average low: 58°F

Policy on Pets and Service Animals

The ASMH prohibits pets in any meeting spaces, with the exception of service animals providing American with Disabilities Act (ADA) reasonable accommodations for a person with disabilities. According to the ADA, a service animal is defined as "any animal individually trained to work or perform tasks for the benefit of an individual with a disability, including, but not limited to, guiding individuals with impaired vision, alerting individuals to an impending seizure or protecting individuals during one, and alerting individuals who are hearing impaired to intruders, or pulling a wheelchair and fetching dropped items.

Attendees may be asked to provide proof of service animal status and/or licensure. Service animals must wear an owner identification tag (which includes the name and phone number of the owner) at all times. Animals must be on a leash, harness or other type of restraint at all times, unless the owner/partner is unable to retain an animal on leash due to a disability. The owner must be in full control of the animal at all times. The care and supervision of the animal is solely the responsibility of the owner/partner.

BE PART OF THE CONVERSATION!

Share your Annual Meeting experience on social media using #ASMH25th

Follow us:



www.facebook.com/ASMHMohs



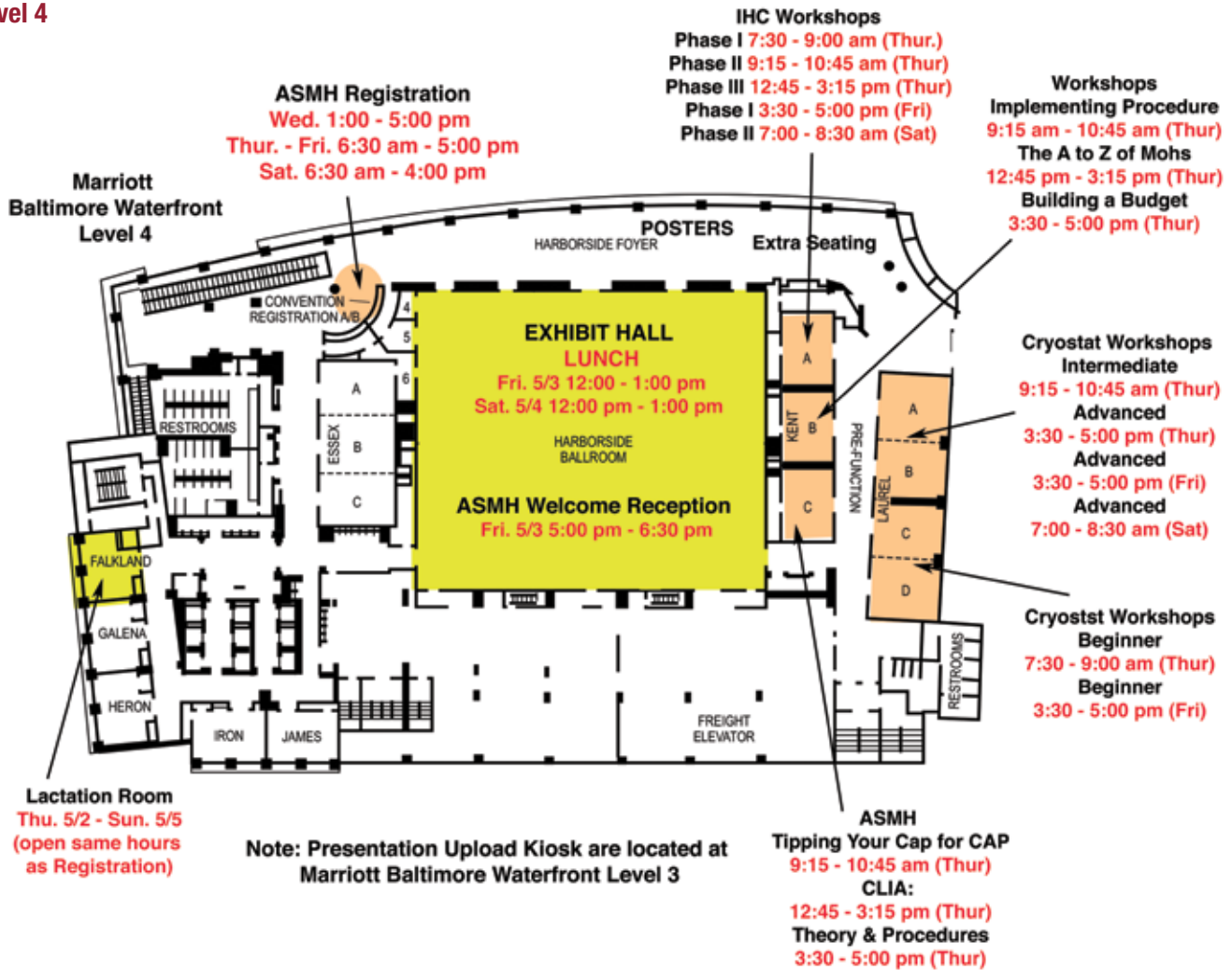
www.twitter.com/ASMHMohs



linkedin.com/company/american-society-for-mohs-histotechnology

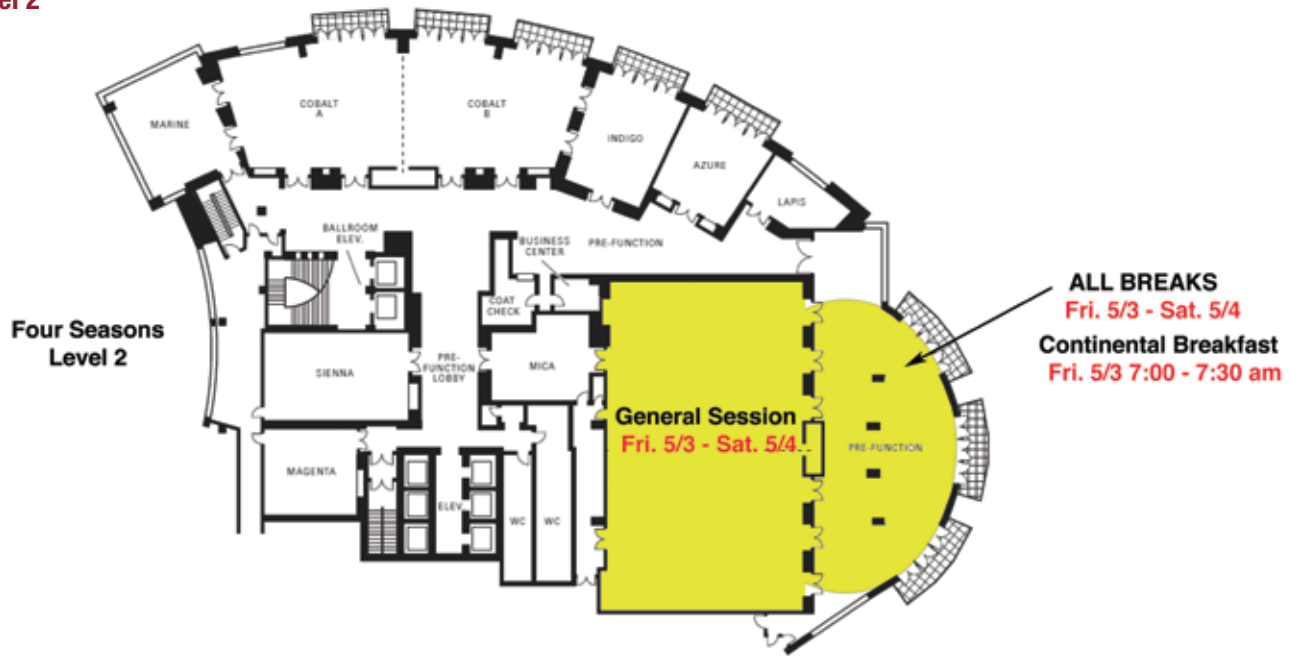
Baltimore Marriott Waterfront Floor Map

Level 4



Four Seasons Hotel Baltimore Floor Map

Level 2



Confidence in your Mohs procedure starts with the belief that you have the right Mohs equipment and supplies.

Confidence

Comes from Being In Control

Avantik believes when you have the right equipment, service and supplies, your Mohs workflow goes precisely as planned. Achieve consistent and reliable results with Avantik's QS12 cryostat – Perfect Sections Every Time.

With Avantik as your single source provider for Mohs, you'll have the confidence for optimal patient care.

Visit Us at Booth #109!

AVANTIK

Lab Set-Ups

Lab Design

Lab Equipment

Lab Consumables

Mohs Technician Training

CLIA Certification



CALL TODAY TO SPEAK TO YOUR **MOHS LAB SPECIALIST** REGARDING ALL OF YOUR NEEDS!

800.783.9424

avantik-us.com



Improve Your Skills as a Mohs Tech

ASMH American Society for Mohs Histotechnology

The ASMH offers customized, hands-on training sessions through its Mohs Technician Training Program. Offered exclusively to technicians who have at least six months experience cutting tissue, this on-site training will include lecture and hands-on training on topics such as mapping and inking, embedding, staining, cryosectioning, CLIA regulations, troubleshooting, and more.

Thursday, June 27-28, 2019

8:30 am - 3:00 pm

Sakura Finetek USA, Inc., 1750 West 214th Street, Torrance, CA 90501

ASMH members: \$750 / Non-members: \$1,000

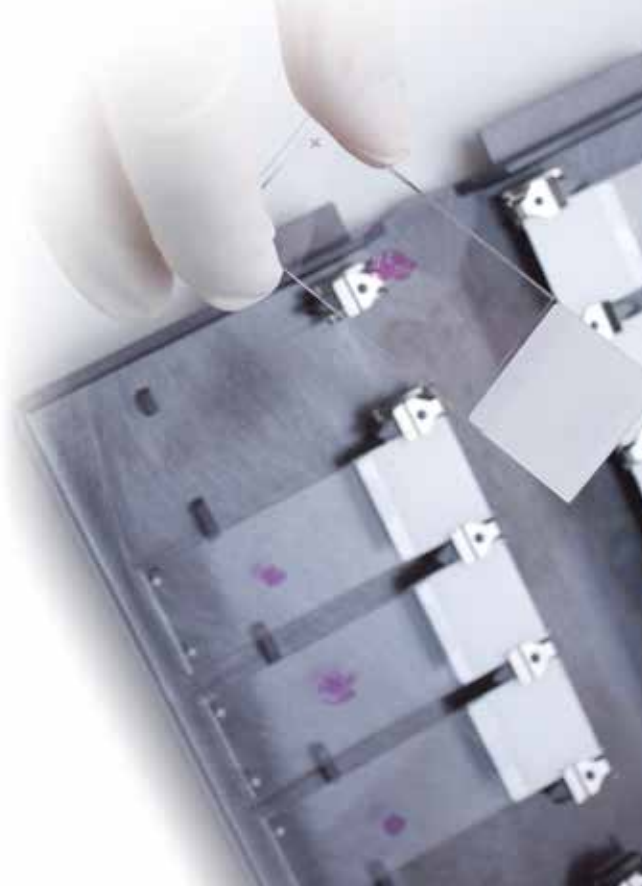
Non-member registration will include ASMH membership through 2019.

\$50 discount per trainee for practices sending more than one tech

Upon completion, trainees can claim 12 CEUs through the National Society for Histotechnology and will receive a certificate of completion from the ASMH/ACMS. For more information about the Mohs Technician Training Program or customized training opportunities, click here or contact the ASMH office at (414) 918-9813 or info@mohstech.org.

For details, hotel reservations, and to register, visit

www.mohstech.org/training



The premier resource to connect Mohs surgeons and histotechs with career opportunities is right at your fingertips.

Mohs Surgery Career Center

The Mohs Surgery Career Center will allow you to:

Manage Your Career:

- Search and apply for the best jobs at organizations that value your credentials
- Upload your anonymous resume so employers can contact you while maintaining control of your anonymity
- Receive an alert every time a job becomes available that matches your personal profile, skills, interests and preferred location(s)
- Have your resume evaluated by a resume-writing expert
- Access career resources, such as resume-writing tips, interview tips, and industry career information

Recruit for Open Positions:

- Post your jobs, or your institutions' jobs, where the most qualified professionals will find and apply for them
- Manage your posted jobs and applicant activity easily on our user-friendly site
- Email your jobs directly to job seekers via our exclusive Job Flash email
- Search the resume database and contact qualified candidates proactively



ACMS
American College
of Mohs Surgery

ASMH
American Society for
Mohs Histotechnology

Visit <https://careers.mohscollege.org>

Pre-Conference Workshops – Thursday, May 2

Yoga – Marriott: Poolside Deck/Level 5

7:30 – 9:00 am

Kathi McAdoo

Calling all sore bodies! Come join us to learn about the benefits of yoga, including easing tension, avoiding the tightening of shoulder and neck muscles, and fighting problems often caused by standing for long hours, such as varicose veins, slouching, and fatigue. We will also learn effective breathing to increase oxygen levels, lower stress, and improve your overall well-being. This will be a fully immersive class, so please bring a towel and wear comfortable clothing that you can move freely in. Beginners welcome and encouraged to attend.

IHC Phase I: Where Do I Begin? – Marriott: Kent A/Level 4

7:30 – 9:00 am

Robert L. Milewski, HT

Your Mohs surgeon is interested in providing Immunohistochemistry (IHC) testing, particularly for melanoma in situ, and has asked you to investigate what is needed. This is an interactive workshop designed to provide information on how to set up a laboratory for Mohs IHC, and will include what is required for equipment, reagents, protocols and procedures, CLIA and CAP requirements, validation, cost analysis, vendor search, safety, record keeping, and many minute details. Questions are highly encouraged. Also offered on Friday, May 3 from 3:30-5:00 pm.

Beginner Cryostat – Marriott: Laurel C-D/Level 4

7:30 – 9:00 am

Rodney K. Barber, HT; Stephanie S. Petrow, HT

Those new to Mohs histotechnology will receive direct guidance and advice from experienced workshop leaders on cryostat use in the Mohs lab, and time will be given to practice cutting techniques. Also offered on Friday, May 3 from 3:30 – 5:00 pm.

IHC Phase II: The Technique of Immunohistochemistry

Marriott: Kent A/Level 4

9:15 – 10:45 am

Robert L. Milewski, HT

This is an interactive, hands-on workshop designed to acquaint participants with how to stain Mohs frozen sections for immunohistochemistry. Emphasis will be on the critical moments of the staining procedure, demonstration of methods, and common problems that occur. All materials will be provided and this will be a safe, hazard-free workshop. Questions are highly encouraged. Also offered on Saturday, May 4 from 7:00-8:30 am.

Intermediate Cryostat – Marriott: Laurel A-B/Level 4

9:15 – 10:45 am

Rodney K. Barber, HT; Stephanie S. Petrow, HT

Experienced techs will learn numerous cryostat embedding methods, as well as troubleshooting and cryostat maintenance.

Implementing Procedures and Document Control in the Mohs Lab – Marriott: Kent B/Level 4

9:15 – 10:45 am

Linda R. Cesario, DPM, HT (ASCP); Kahul G. Patel, BSMT

Procedure and documentation is critical in running your lab to maintain a safe environment and to assure quality patient care. The first step in preparing for a regulatory inspection is having the necessary laboratory policies and procedures in place. We will cover a methodical approach to creating and implementing policies and procedures in the Mohs lab. Participants will learn how to build a manual to entail technical procedures, Quality Assurance (QA), Quality Management (QM), alternate proficiency assessment, competency assessment, and safety guidelines. We will also discuss electronic document control such as MediaLab and the CLIA/CAP application process. Bring your procedure manual questions with you to this workshop.

Tipping Your Cap for CAP: Tips on How to Make Inspections Go Smoothly – Marriott: Kent C/Level 4

9:15 – 11:45 am

Angelic Maden MS HT (ASCP)^{cm}; Lindsey E. Riggs, HTL; Jeanie Wade, HT (ASCP)

This workshop will cover how to prepare for inspections, understand difference between CAP and CLIA and how they work together while developing a structured format to ensure success. Bring your procedure manual questions with you to this workshop.

IHC Phase III: Immunohistochemistry Theory and Details for the Mohs Lab – Marriott: Kent A/Level 4

12:45 – 3:15 pm

Robert L. Milewski, HT

This presentation of the biochemistry of immunohistochemical techniques will include how antibodies work and the development of detection systems. Also included will be detailed description of pH, use of a concentrated antibody, how to properly develop and document a working dilution using a micropipette, and the advantages/disadvantages of concentrated antibodies versus manufacturer ready-to-use antibodies. This is an introduction to a variety of antibodies other than MART-1 and their uses in the Mohs laboratory.

The A to Z of Mohs Procedures: Technical Guidance on Potential Pitfalls – Marriott: Kent B/Level 4

12:45 – 3:15 pm

Guy E. Orchard, PhD, MSc, FIBMS; Mohammad Shams

This workshop will focus on debate and discussion of participants' Mohs technical problems, along with suggested remedies. A presentation encompassing all the common artifacts seen in Mohs laboratories and how best to troubleshoot and avoid these occurring will also be given.

CLIA: What You Need to Know – Marriott: Kent C/Level 4

12:45 – 3:15 pm

Kimberly R. Brock, BS, HT (ASCP); Linda R. Cesario, DPM, HT (ASCP); Daniel H. Gong, MS, MSO, C-PM; Jeanie Wade, HT (ASCP)

This workshop will offer a comprehensive discussion and open forum on CLIA compliance and regulatory requirements for the Mohs laboratory. Bring your procedure manual questions with you to this workshop.

Pre-Conference Workshops – Thursday, May 3

Building a Budget for the Mohs Lab – Marriott: Kent B/Level 4

3:30 – 5:00 pm

Lindsey E. Riggs, HTL

This workshop will focus on how to build a budget for acquiring new/used equipment for a new Mohs lab as well as updating an existing lab.

Theory and Procedures for Routine Staining of Mohs Slides

Marriott: Kent C/Level 4

3:30 – 5:00 pm

Melinda M. Chow, MS, HT (ASCP)^{cm}

This presentation of typical staining for the screening of Mohs frozen sections will include the chemistry and procedures of various stains (monochromatic, polychromatic, progressive, regressive), how they color tissue, suggested protocols, and troubleshooting problems. Manual vs. automatic staining procedure will be discussed. Participants are encouraged to bring in stained slides for troubleshooting. This workshop will not include the wet staining of slides.

Advanced Cryostat – Marriott: Laurel A-B/Level 4

3:30 – 5:00 pm

Jeanie Wade, HT (ASCP)

An in-depth presentation on processing full thickness wedge specimens, this workshop will also provide instructions on how to acquire a complete representative section of fatty (non-cutting) type tissue, how to manipulate the contours of cartilage and to transition epidermis to an even plane with the deep margin. Also offered on Friday, May 3 from 3:30-5:00 pm and on Saturday, May 4 from 7:00-8:30 am.

Workshop attendees are eligible for CEUs through the National Society for Histotechnology, in addition to, CEUs from the General Session/Workshops during the Annual Meeting.

Don't Miss the Boat!

CELEBRATE THE 25TH ANNUAL MEETING WITH ASMH
ABOARD THE RAVEN IN BALTIMORE'S INNER HARBOR

Saturday, May 4, 2019

6:30 - 9:00 pm — with 7:00 pm launch

Tickets on sale now!

ASMH American Society for
Mohs Histotechnology

Scientific Program – Friday, May 3

7:30 – 9:45 am

General Session 1

The Four Seasons: Grand Ballroom/Level 2

7:30 – 7:45 am

Opening Remarks and Welcome

M. Maureen Gagnot, HT (ASCP), ASMH President

7:45 – 8:15 am

Fundamentals for Everyone

Kurt Hemmings

We all learned to process tissue from someone and some lucky ones may have had the chance to learn a different technique at a second practice. Reviewing some best practices along with the rationale behind them might break some bad habits or reinforce a method that you already mastered.

8:15 – 8:45 am

Cutaneous Oncology: Why We Do What We Do

Valencia D. Thomas, MD, FACMS

This session provides a discussion of common Mohs tumors, including clinical presentation, histology, and prognosis. Upon completion of the session, participants will be more familiar with tumors that present to the Mohs unit and their impact on patient care.

8:45 – 9:45 am

Ergonomics in the Laboratory

Allison Eck, HTL (ASCP)^{cm}, QLS, AHI

Everything that we do in our workflow can have an effect on our body. This session will look at the history of ergonomics, how to set up workstations properly, and how to adjust your workflow to prevent musculoskeletal injuries. This session will also teach a short sequence of exercises that can be done in a work environment to mitigate injuries caused by repetitive movements.

9:45 – 10:00 am

Break

The Four Seasons: Grand Ballroom Foyer Level/2

10:00 am – 12:00 pm

General Session 2

The Four Seasons: Grand Ballroom/Level 2

10:00 – 10:30 am

Safety in the Histology and Mohs Lab: Beyond Universal Precautions

Barbara S. Beck, HT/HTL (ASCP)

We all know Universal Precautions are to be used in the laboratory. We will discuss Beyond the Universal Precautions and the safety rules to follow in your lab to have a safe working environment.

10:30 – 11:00 am

To Mohs or Not to Mohs

Shari A. Nemeth Ochoa, MD, MS, FACMS

A review of the appropriate use criteria for Mohs surgery and how pathology dictates tumor treatment.

11:00 am – 12:00 pm

Troubleshooting Open Forum

Angelic R. Maden, HT (ASCP)^{cm}; Lindsey E. Riggs, HTL

Meeting attendees, both new and experienced, are encouraged to attend this open-format discussion for tips, tricks and techniques from fellow Mohs technicians. Questions and concerns can be submitted anonymously and dropped off in advance at the Registration Desk or presented in person during the forum.

12:00 – 1:00 pm

Lunch

Marriott: Harborside Ballroom/Level 4

1:00 – 3:30 pm

General Session 3

The Four Seasons: Grand Ballroom/Level 2

1:00 – 1:45 pm

Large or Small, the Mohs Lab Does it All. Private, Hospital and Corporate: How Do We Differ?

Angelic R. Maden, HT (ASCP)^{cm}, Lindsey E. Riggs, HTL; Jeanie Wade, HT (ASCP)

Representatives from different size and types of Mohs practices facilitate a discussion of how we get things done. Discover ways we are alike and how we differ. Can shifting your perspective give you new insight to your situation?

1:45 – 2:30 pm

The Ups and Downs of Maintaining Your Cryostat

James F. Kovach, Tech One Biomedical

Learn how to diagnose and resolve problems with your cryostat, before you call for service. Disassembling, cleaning and adjusting your knife holder will be discussed.

2:30 – 3:30 pm

Harassment: Recognition and Avoidance

Billy R. Parsons, VP Human Resources, US Dermatology Partners

Harassment has consistently been an issue in the American workplace. This is an opportunity to recognize the many forms of harassment and how to avoid or mitigate as many as possible.

Scientific Program – Saturday, May 4

9:00-10:00 am

ASMH Business Breakfast Meeting & Breakfast*

The Four Seasons: Grand Ballroom/Level 2

Business meeting to announce 2019 Board of Directors election results, ASMH year in review, as well as plans and goals for the coming year.

*Breakfast will be served during the business meeting only.

ASMH Members Only

10:00-12:00 pm

General Session 4

The Four Seasons: Grand Ballroom/Level 2

10:00-10:30 am

ASMH: We Have Come So Far, With Boundless Opportunities for the Future

Kimberly R. Brock, BS, HT (ASCP); M. Maureen Gagnot, HT (ASCP); Daniel H. Gong, MS, MSO, C-PM

Over the past 25 years The American Society for Histotechnology has continually evolved. Let's explore how and where it began, how far we've come and where we're headed. These milestones are remarkable. The future looks bright for the ASMH and the field of Mohs Histotechnology. Please join us in a retrospection of the origins/future of the ASMH.

10:30 – 11:00 am

Artifact or Fiction: Recognizing H&E Patterns of Processing Errors

Bryan Carroll, MD, PhD, FACMS

This session will review the diagnostic challenges of histologic patterns of cutaneous tumors that mimic technical errors of Mohs histologic processing.

11:00 am – 12:00 pm

Troubleshooting Open Forum

Angelic R. Maden, HT (ASCP)^{pm}; Lindsey E. Riggs, HTL

Meeting attendees, both new and experienced, are encouraged to attend this open-format discussion for tips, tricks and techniques from fellow Mohs technicians. Questions and concerns can be submitted anonymously and dropped off in advance at the Registration Desk or presented in person during the forum.

12:00 – 1:00 pm

Lunch

Marriott Waterfront: Harborside Ballroom/Level 4

1:00 – 2:15 pm

General Session 5

The Four Seasons: Grand Ballroom/Level 2

1:00 – 1:30 pm

Dying for a Tan: Evidence for Photocarcinogenesis

Guy E. Orchard, PhD, MSc, FIBMS

The evidence for the main cause and effect of photocarcinogenesis due to ultra violet light will be explained with evidence from scientific evaluation of how these affects are monitored. Counter indicators for the use of sun beds particularly in the young will be explained.

1:30 – 2:15 pm

Panel – Communication in the Lab

Richard S. Lewis, MD, FACMS; Lindsey E. Riggs, HTL; Tara A. Dunn; Matthew C. Fox, MD, FACMS; Leandra Turner, HT (ASCP)^{pm}

The questions most asked on a daily basis by the Mohs surgeon and Mohs tech will be discussed, along with the most frequent answers and tips on communication. Audience participation is encouraged.

2:15 – 2:30 pm

Break

The Four Seasons: Grand Ballroom Foyer/Level 2

2:30 – 4:30 pm

General Session 6

Grand Ballroom Level 2 at The Four Seasons

2:30 – 3:00 pm

A Cut Above the Rest: Why Quality Matters in Mohs Histotechnology

Jayne S. Joo, MD

Have you ever wondered what happens outside of the Mohs lab? This session will provide an overview of the clinical side to Mohs micrographic surgery and why what the Mohs tech does is so important to patient care.

3:00 – 3:30 pm

Whole Mount Sections

James O. Barlow, MD, FACMS

This session will focus on the advantages and benefits of processing Mohs specimens as Whole Mount Sections. The technical aspects of how to perform this technique will be reviewed.

3:30—4:00 pm

The Flipped Tissue Method

Norma L. Anderson, HT (ASCP)

The term “floater” in Mohs surgery refers to displaced fragments of tumor tissue that have the potential to obscure interpretation of specimens processed during Mohs micrographic surgery. The Flipped Tissue Method (FTM) is used to decrease the incidence rates of floaters and false positives.

4:00 – 4:30 pm

Grossing and Embedding Less Than Ideal Specimens

Angelic Maden, MS, HT (ASCP)^{pm}

We expect layers taken from challenging locations to be “interesting to process”. But what about the layer that seems it should have been no big deal that comes to your lab as a hot mess? Strategies and choices for dealing with challenging bevels, holes, and double cuts will be covered.

Cryostat and Immunohistochemistry Workshop Details

The following workshops require a separate ticket for entry.

Cryostat Workshops

Beginner Cryostat – Marriott: Laurel C-D/Level 4

Friday, May 3, 3:30 – 5:00 pm

Robert Tagliaferro, HT (ASCP)^{cm}

Those new to Mohs histotechnology will receive direct guidance and advice from experienced workshop leaders on cryostat use in the Mohs lab, and time will be given to practice cutting techniques.

Advanced Cryostat – Marriott: Laurel A-B/Level 4

Friday, May 3, 3:30 – 5:00 pm OR Saturday, May 5, 7:00-8:30 am

Jeanie Wade, HT (ASCP)

An in-depth presentation on processing full thickness wedge specimens, this workshop will also provide instructions on how to acquire a complete representative section of fatty (non-cutting) type tissue, how to manipulate the contours of cartilage and to transition epidermis to an even plane with the deep margin.

Immunohistochemistry Workshops

IHC Phase I: Where Do I Begin? – Marriott: Kent A/Level 4

Friday, May 3, 3:30 – 5:00 pm

Robert L. Milewski, HT

Your Mohs surgeon is interested in providing Immunohistochemistry (IHC) testing, particularly for melanoma in situ, and has asked you to investigate what is needed. This is an interactive workshop designed to provide information on how to set up a laboratory for Mohs IHC, and will include what is required for equipment, reagents, protocols and procedures, CLIA and CAP requirements, validation, cost analysis, vendor search, safety, record keeping, and many minute details. Questions are highly encouraged.

IHC Phase II: The Technique of Immunohistochemistry – Marriott: Kent A/Level 4

Saturday, May 4, 7:00 – 8:30 am

Robert L. Milewski, HT

This is an interactive, hands-on workshop designed to acquaint participants with how to stain Mohs frozen sections for immunohistochemistry. Emphasis will be on the critical moments of the staining procedure, demonstration of methods, and common problems that occur. All materials will be provided and this will be a safe, hazard-free workshop. Questions are highly encouraged.



Sharpoint **PLUS**
Surgical Sutures™

Try it FREE. The New Sharpoint Suture

Our Sharpoint Sutures are available in absorbable and non-absorbable materials. **Buy direct from us and save 50%** versus comparable brands.

VISIT BOOTH #301 to receive a FREE trial of Sharpoint

SURGICAL SPECIALTIES CORPORATION™

SHARPOINT.COM
SURGICALSPECIALTIES.COM

Surgical Specialties Corporation, 247 Station Drive, Suite NE1, Westwood, MA 02090, U.S.A. All trademarks are property of their respective owners. © 2019 Surgical Specialties Corporation.

Thank You

ASMH expresses sincere appreciation to all speakers, session participants, and workshop volunteers for their contribution to the meeting program:

Speakers & Presenters

Norma L. Anderson, HT (ASCP)
James O. Barlow, MD, FACMS
Barbara S. Beck, HT/HTL (ASCP)
Kimberly R. Brock, BS, HT (ASCP)
Bryan Carroll, MD, PhD, FACMS
Tara A. Dunn
Allison Eck, HTL (ASCP)^{cm}, QLS, AHI
Matthew C. Fox, MD, FACMS

M. Maureen Gagnot, HT (ASCP)
Daniel H. Gong, MS, MSO, C-PM
Kurt Hemmings
Jayne S. Joo, MD
James F. Kovach
Richard S. Lewis, MD, FACMS
Angelic R. Maden, HT (ASCP)^{cm}
Shari Ochoa, MD, MS, FACMS

Guy E. Orchard, PhD, MSc, FIBMS
Billy Parsons
Lindsey E. Riggs, HTL
Valencia D. Thomas, MD, FACMS
Leandra Turner, HT (ASCP)^{cm}
Jeanie Wade, HT (ASCP)

Workshop Associate Trainers

Norma L. Anderson, HT (ASCP)
Tara A. Dunn
Lara Hall

Kathi McAdoo
Marilyn McCulloch, CLT
Robin M. Seaver, MLT/HT (ASCP)^{cm}

Toni G. Tedrick, RMA

ASMH Thanks Its Supporters

The American Society for Mohs Histotechnology gratefully acknowledges the following companies for their contributions and support to help underwrite the educational goals of the ASMH Annual Meeting.

REGENERON

Gold Sponsor



Gold sponsor



Gold sponsor



ASMH Notepads



Instrument sponsor



Cryostats
Workshop Supplies
Registration Bags



Workshop Supplies



Hotel key cards



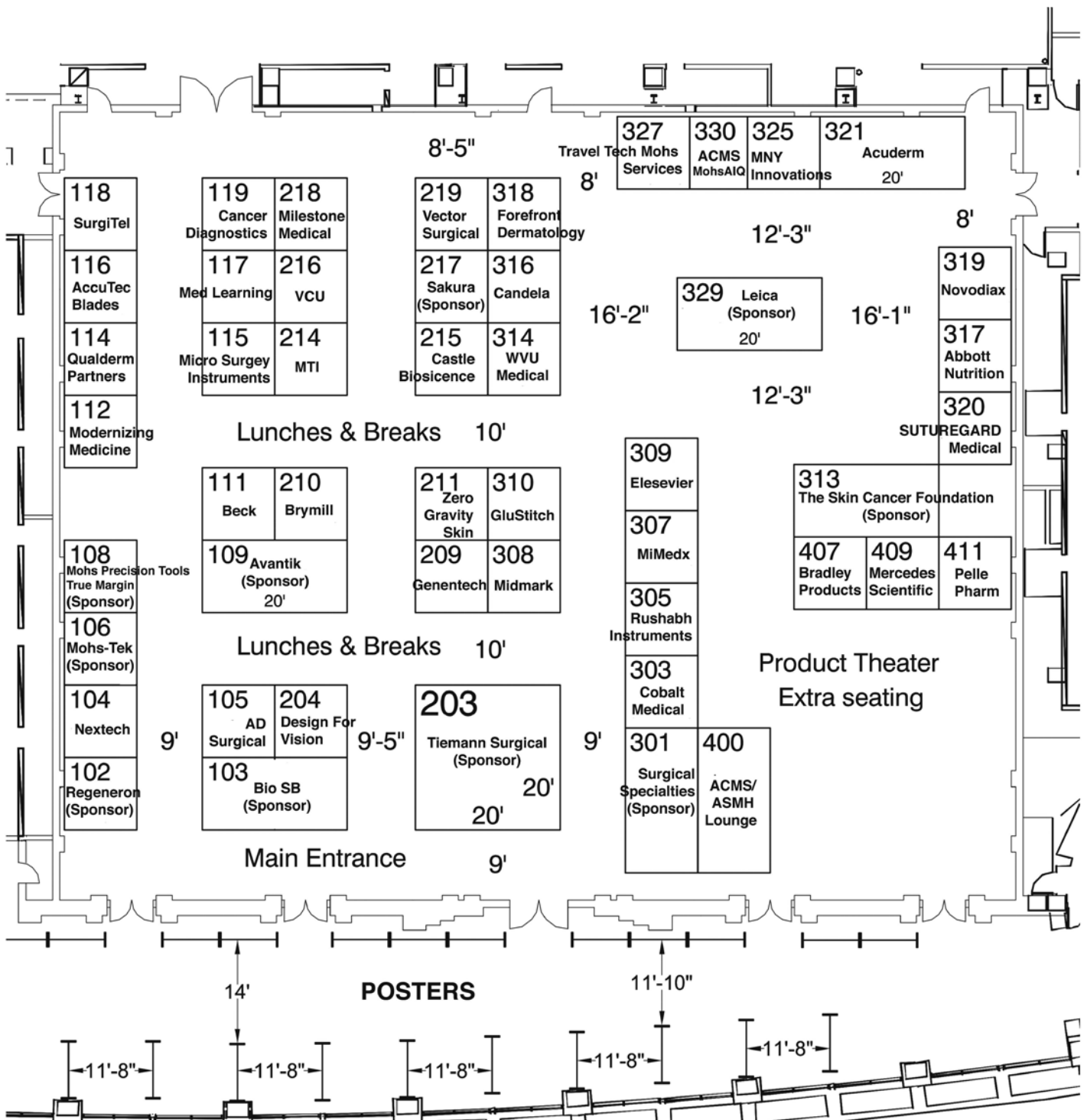
Cryostats



Microscopes

Exhibit Hall Floor Plan

Harborside Ballroom/Level 4



Exhibitor Listing

(listing as of 3/20/19)

Attendees are encouraged to visit the technical exhibits during the ASMH Annual Meeting. A variety of companies of interest to Mohs histotechnologists and surgeons will be displaying their products, equipment, and services. Please be sure to visit the Exhibit Hall to learn about their quality offerings.

Exhibit Hall Hours

Thursday, May 3: 9:30 am – 7:30 pm

Friday, May 4: 10:00 am – 6:30 pm

Saturday, May 5: 9:30 am – 2:00 pm

330 ACMS MohsAIQ Registry

(powered by ArborMetrix)
registry@mohscollege.org
www.mohscollege.org/registry
www.arbormetrix.com

The MohsAIQ registry (pronounced mosaic, which stands for Mohs Surgery Advancing & Improving Quality), powered by ArborMetrix, will help the ACMS and its members demonstrate the value of Mohs surgery as patient-centered, timely, and highly effective. MohsAIQ will provide meaningful data about patients and performance in order to improve outcomes and maximize results under new payment models. ArborMetrix was founded by internationally-recognized surgeons and uses a technology platform purpose-built to support medical specialty society registries. We are proud to be the vendor of record for the ACMS registry, which will leverage our flexible technology infrastructure, advanced analytics, and interactive dashboards to support quality improvement initiatives and clinical research leading to the identification of best practices.

317 Abbott Nutrition

3300 Stelzer Rd.
Columbus, OH 43219
P (800) 551-5838
F (540) 248-9741
kellie.warner@abbott.com
www.abbottnutrition.com

Abbott Nutrition, Juven is a targeted amino acid therapeutic powder drink that has been clinically shown to support tissue repair and help build and maintain lean body mass.

116 AccuTec Blades, Inc.

1 Razor Blade Lane
Verona, VA 24482
P (540) 248-8000
billie.smith@atblades.com
www.atblades.com

Our expertise crosses many fields. We are a proven global innovator in diverse areas: Surgical, histological, food, fiber and glass blades and bladed solutions. We are proud partners to the medical community and participate in a variety of medical conference and shows.

321 Acuderm, Inc.

5370 NW 35th Terrace, Suite 106
Ft. Lauderdale, FL 33309
P (954) 733-6935
cust-service@acuderm.com
www.acuderm.com

Acuderm is proud to have been serving the dermatology industry for 34 years. We offer top quality, German-made surgical instruments at significant savings! We invite you to feel the difference and save! As with all our products, we offer 100% satisfaction guarantee! When you think high quality with exceptional value, think Acuderm!

105 AD Surgical

1296 Kifer Road, Suite 608
Sunnyvale, CA 94086
P (888) 841-8481
info.usa@ad-surgical.com
www.ad-surgical.com

As the prices of surgical products continue to skyrocket, surgeons are looking for more cost effective solutions without compromising quality. AD Surgical was established in 2000 by medical professionals who understand the challenges and needs of today's practicing surgeons. Our mission is to offer a selection of top quality surgical essentials, including sutures, scalpels, gloves and drapes, at the best prices to our colleagues so that they can be more productive and profitable.

109 Avantik (Sponsor)

36 Commerce St. | PO Box 619
Springfield, NJ 07081-0619
P (973) 912-8900 ext. 159
F (973) 232-0077
sean.gallagher@avantik-us.com
www.avantik-us.com

Avantik is the #1 name in Mohs. Avantik offers total lab solutions with the revolutionary QS12 croystat, quality guaranteed consumable goods, and outstanding warranty-backed remanufactured instruments. From Mohs lab design, to planning and set-up, to the industry's most responsive service and support network, and to unmatched educational programs with trusted industry partners, Avantik is THE choice in Mohs!

Exhibitor Listing

111 Beck Consulting & Associates, Inc.

1220 Nettles Blvd.
Jensen Beach, FL 34957
P (828) 369-2315
F (800) 282-3015
histobarb@msn.com
www.beck-us.com

Beck Consulting provides the only accredited program for technical training and consulting for Mohs and Histology laboratories for more than 15 years! We offer complete technical assistance and training for Mohs and Histology, as well as the ability to train on your own equipment in your own office, or one of our workshops. Become proficient in cutting Mohs and Histopathology sections, and experience full lab setups for both dermpath and Mohs. Training includes CLIA/OSHA documentation. We have 623 labs set up to date with zero deficiency ratings, and can create a procedure manual specific to your lab. Ask for our available references!

103 BIO SB, Inc. (Gold Sponsor)

69 Santa Felicia Dr.
Santa Barbara, CA 93117
P (805) 705-8398
ppatterson@biosb.com
www.biosb.com

Bio SB performs R&D, production, distribution and marketing of unique products for immunohistochemistry, Fluorescent in situ hybridization (FISH), and Chromogenic in situ hybridization (CISH) technologies that meet the highest international standards for applications in molecular pathology, cancer research, microbiology, immunology and genetics.

407 Bradley Products, Inc.

1700 W. 94th St.
Bloomington, MN 55431
P (952) 881-4130
dms@bradleyproducts.com
www.bradleyproducts.com

Worldwide supplier of high-quality tissue marking dyes.

210 Brymill Cryogenic Systems

105 Windermere Ave.
Ellington, CT 06029
P (860) 875-2460
dmbryne@san.rr.com
www.brymill.com

Please stop by Brymill Cryogenic Systems, the world leader in hand-held liquid nitrogen equipment since 1966. See why Brymill Cryogenic Systems sets the industry gold standard! Brymill is the first choice of U.S. dermatologists (85%) in a recent survey. See our newest CRY-AC (R) family member, the CRY-BABY(R)! Special pricing and giveaways!

119 Cancer Diagnostics, Inc.

4300 Emperor Blvd. Suite 400
Durham, NC 27703
P (877) 846-5393
info@cancerdiagnostics.com
www.cancerdiagnostics.com

Please request your free sample bottle of UltraFreeze OCT Compound and CDI's Tissue Dyes at our booth. Founded in 1998, Cancer Diagnostics, Inc. (CDI) developed the first commercially available 7-dye color kit for marking tissue margins, CDI's Tissue Marking Dyes and today offers one of the industry's largest anatomical pathology/Mohs portfolios of products to more than 3,500 customers. Explore our newest catalog and find out what makes CDI the fastest growing supplier to the worldwide anatomical pathology and Mohs market.

316 Candela

530 Boston Post Road
Wayland, MS 01778
P (949) 716-6670
info@syneron-candela.com
www.syneron-candela.com

Candela is a leading aesthetic device company with an extensive product portfolio and expansive global footprint. The Company's technology provides advanced solutions for a variety of medical-aesthetic applications, including wrinkle reduction, hair removal, tattoo removal, body contouring, and treatment of vascular and pigmented lesions, scars, acne, leg veins and cellulite.

215 Castle Biosciences, Inc.

820 S. Friendswood Dr., Suite 201
Friendswood, TX 77546
P (866) 788-9007
F (866) 431-2924
tjuvenal@castlebiosciences.com
www.castlebiosciences.com

Castle Biosciences, Inc. is a cancer-focused molecular diagnostics company dedicated to helping patients and their physicians make the best possible decisions about their treatment and care based on the individual molecular signature of their tumor. DecisionDx-Melanoma is a new test that identifies metastatic risk in melanoma patients (www.SkinMelanoma.com).

303 Cobalt Medical Supply, Inc.

PO Box 367
Pequannock, NJ 07440
P (973) 305-0730
mmazon@cobaltmed.com
www.cobaltmed.com

Cobalt is a full-line provider of surgical and clinical equipment, instruments and supplies to complement the needs of the dermatologist and surgeon. We match great service with high-quality products to assist our clients with the many needs and challenges they have.

Exhibitor Listing

204 Designs For Vision, Inc.

4000 Veterans Memorial Highway
Bohemia NY, 11716
P (631) 585-3300
F (631) 585-3404
info@dvimail.com
www.designsforvision.com

Just See It™ with Designs for Vision's lightweight custom-made surgical Telescopes- now available with Nike® frames. See It Even Better™ with the L.E.D Daylite® or Twin Beam® L.E.D. Daylite® providing the brightest and safest un-tethered illumination. Introducing the L.E.D. Daylite® Nano Cam HD document procedure and HD video from your perspective.

309 Elsevier, Inc.

1600 JFK Blvd. Suite 1600
Philadelphia, PA 19103
P (215) 239-3900
csexhibits@elsevier.com
www.elsevier.com

Elsevier is a world-leading provider of information solutions that enhance the performance of science, health, and technology professionals, empowering them to make better decisions, and deliver better care.

318 Forefront Dermatology

801 York Street
Manitowoc, WI 54220
P (920) 633-9010
joinderm@forefrontderm.com
www.joindermsuccess.com

Forefront Dermatology is one of the largest physician-led and -operated dermatology group practices. Our mission is to provide dermatologists with an environment that allows them to focus entirely on patient care, emphasize sub-specialty interest, and benefit from the administrative expertise provided by our shared support services.

209 Genentech

1 DNA Way
South San Francisco, CA 94080
P (650) 255-2169
emusser@gene.com
www.gene.com

For more than 40 years, we've been following the science, seeking solutions to unmet medical needs. As a proud member of the Roche Group, we make medicines to treat patients with serious medical conditions.

203 George Tiemann Surgical (Sponsor)

25 Plant Ave.
Hauppauge, NY 11788
P (800) 843-6266
F (800) 577-6050
brian@georgetiemann.com
www.georgetiemann.com

Tiemann will display a full line of surgical instruments and accessories for Mohs surgery. We are experts at assisting the Mohs surgeon assemble surgical trays.

310 Glustitch, Inc.

#307-7188 Progress Way
Delta, BC V4G1M6
P (877) 940-2262
jamie@glustitch.com
www.dermglu.com

GluStitch Inc manufactures GluStitch Twist and GluSeal cyanoacrylate tissue adhesives. These tissue adhesives are used for the closure of surgical incisions and as a liquid bandage intended to cover minor cuts, scrapes, burns, and minor irritations of the skin and help protect them from infection.

331 Leica Biosystems (Sponsor)

1700 Leider Lane
Buffalo Grove, IL 60089
P (800) 248-0123
ryan.gresavage@leicabiosystems.com
www.leicabiosystems.com

Leica Biosystems is a global leader in workflow solutions and automation, integrating each step in the workflow from biopsy to diagnosis. Our mission of "Advancing Cancer Diagnostics, Improving Lives" is at the heart of our corporate culture. Our easy-to-use and consistently reliable offerings help improve workflow efficiency and diagnostic confidence.

117 Med Learning Group

450 7th Ave. 32nd Floor
New York, NY 10123
P (215) 498-0321
agrzybowski@medlearninggroup.com
www.medlearninggroup.com

Med Learning Group focuses on developing and implementing continuing education programs that improves healthcare practitioners' ability to provide optimal care to their patients.

409 Mercedes Scientific

12210 Rangeland Pkwy
Bradenton, FL 34211
P (800) 331-2716
mjenkins@mercedesscientific.com
www.mercedesscientific.com

Mercedes Scientific is a privately held and woman-owned medical and laboratory supply distributor located in Lakewood Ranch, Florida. Since 1991, we have been dedicated to providing customers with competitive prices on quality products that we source both domestically and from around the world.

115 Microsurgery Instruments

4918 Locust St.
Houston, TX 77042
P (713) 664-4707
microusa@microsurgeryusa.com
www.microsurgeryusa.com

Microsurgery Instruments sells surgical instruments and loupes worldwide. Our titanium instruments consist of scissors, needle holders, forceps & surgical sets. Loupes range from 2.5x to 11x magnification.

Exhibitor Listing

308 Midmark Corporation

60 Vista Dr.
Versailles, OH 45380
P (800) 643-6275
F (800) 365-8631
felsass@midmark.com
www.midmark.com

Midmark Corporation is committed to providing innovative products and solutions to healthcare professionals around the world. Offering full lines of exam and procedures tables, as well as workstations, casework, instrument processing, digital diagnostic solutions and more. Midmark is focused on continuously improving physician workflows and enhancing patient-caregiver interactions.

218 Milestone Medical Technologies, Inc.

6475 Technology Ave, Ste, F
Kalamazoo, MI 49009
P (269) 488-4950
F (269) 488-4949
s.merritt@milestonemed.com
www.milestonemed.com

Milestone was the first company to design and build a microwave tissue processor, and subsequently created the first fully automated, high-throughput microwave processor. Today, we have a full portfolio of cutting edge instrumentation, including the PrestoCHILL system that provides a failsafe Cryoembedding method that can increase Mohs surgery productivity.

307 MiMedx

1775 West Oak Commons court
Marietta, GA 30062
P (770) 651-9100
crittenhouse@mimedx.com
www.mimedx.com

MiMedx is the leading supplier of amniotic and placental tissue products, having supplied more than 1,000,000 allografts to date for application in the wound care, burn, surgical, orthopedic, spine, sports medicine, ophthalmic, and dental sectors of healthcare. MiMedx® patent-protected biomaterial products and tissues include EpiFix®, EpiCord, AmnioFix®, AmnioCord, and AmnioFill™.

325 MNY Innovations

4132 S. Rainbow Blvd Suite #433
Las Vegas, NV 89131
P (702) 302-8853
tamar.lu@mny-innovations.com
www.mny-innovations.com

MNY Innovations is a national distributor for business solutions in various industries. Primarily involved with the medical industry, we also invest in several industries in order to generate self-esteem, productivity, and the confidence to be successful in everyday life. We offer universal products for both men and women through the latest scientific advancements in medical technology. Our non-surgical alternatives to surgery offer a painless, effortless and convenient way to achieve the best results.

112 Modernizing Medicine

3600 FAU Blvd., Suite 202
Boca Raton, FL 33431
P (561) 880-2998 x1615
amy.horn@modmed.com
www.modmed.com/dermatology/

Modernizing Medicine is transforming how healthcare information is created, consumed and utilized to increase efficiency and improve outcomes. The company's product, Electronic Medical Assistant® (EMA™), is a cloud-based, specialty-specific electronic medical record (EMR) system with a massive library of built-in medical content and coding expertise, designed to save physicians time.

108 Mohs Precision Tools | True Margin (Sponsor)

1690 Saint Joseph East
Montreal, Quebec H2J 1M9 Canada
P (844) 288-6647
khemming@mohsprecisiontools.com
www.mohsprecisiontools.com

Mohs Precision Tools is a pioneer in addressing alignment issues in cryostats. The True Margin is the only device that aligns the tissue plane to the microtome blade. We offer cryotomy solutions for busy Mohs surgeons. Perfect sections are our passion.

214 MTI

3655 Ninigret Dr.
Salt Lake City, UT 84093
P (801) 875-4903
F (801) 952-0548
sales@mti.net
www.mti.net

MTI builds the finest powered chairs and mobile cabinets in the world. Our new line of 829/830 procedure chairs and 463/464 exam chairs incorporate SmartSynch™ and ConfortSynch™ technology to provide patient comfort and safety. Both chairs provide industry leading lift capacity, multiple programmable settings and unsurpassed accessibility.

104 Nextech

5550 W. Executive Dr. #350
Tampa, FL 33609
P (803) 425-9260
j.williams@nextech.com
www.nextech.com

Nextech, the leading, fully integrated dermatology-specific EMR and practice management solution, helps specialty practices increase efficiency and profitability across all functional areas. Nextech's intuitive design and customizable templates work seamlessly with the needs of dermatology providers to enhance productivity and overall patient care.

Exhibitor Listing

319 NovodiAx

3517 Breakwater Ave.
Hayward, CA 94545
P (510) 574-7325
diana@novodiox.com
www.novodiox.com

NovodiAx markets ihcDirect®, ready-to-use 10-minute IVD immunohistochemistry tests for Mohs and dermatopathology uses. These rapid immunoassays offer the sensitivity and specificity of IHC's with the speed and simplicity of H&E tests. See us in booth 304 to discover how these novel IVD tests can benefit your patients today.

411 PellePharm, Inc.

101 Mission Street, 19th Floor
San Francisco, CA 94105
P (510) 502-6144
eepstein@pellepharm.com
www.pellepharm.com

PellePharm has developed a topical Hedgehog inhibitor for mitigating the BCC burden in patients with Gorlin syndrome. Syndrome. We have begun this Spring our Phase 3 trial (<https://clinicaltrials.gov/ct2/show/NCT03703310>) in which we are assessing the anti-BCC effect of topical patidegib gel applied twice daily to the face of patients with Gorlin syndrome at approximately 4 dozen sites in the USA, Canada, and Europe. Referral of prospective trial subjects (clinical@pellepharm.com) will be most welcome.

114 QualDerm Partners, LLC

210 Jamestown Park Drive, Suite 250
Brentwood, TN 37027
P (615) 250-6766
andy.mitzen@qualderm.com
www.qualderm.com

QualDerm Partners helps dermatologists position their practices for sustainable profitability. We create market-leading practice partnerships through acquisition and development. QualDerm provides the management support, capital and guidance for growth. Our True Partnership™ model allows physicians to be part of a larger support-driven organization while preserving their clinical autonomy.

314 Regeneron Healthcare Solutions (Gold Sponsor)

777 Old Saw Mill River Road
Tarrytown, NY 10591
P (914) 847-3544
julia.sokolohorsky@regeneron.com
www.regeneron.com

Regeneron is a leading science and technology company delivering life-transforming medicines for serious diseases. Founded by physician-scientists 30 years ago, our science-driven approach has resulted in six FDA-approved medicines and numerous product candidates in a range of diseases, including asthma, pain, cancer and infectious diseases. In addition to our medicines, our innovations include the VelociSuite® technologies, world-class manufacturing operations, one of the largest human genetics sequencing efforts in the world and rapid response technologies being used for global good.

305 Rushabh Instruments, LLC

1750A Costner Dr.
Warrington, PA 18976
P (215) 491-0081 Ext. 1
F (215) 491-0080
preyasshah@att.net
www.qualityhistology.com

Rushabh Instruments, LLC designs and manufactures high quality medical laboratory equipment. We develop and manufacture products that are innovative, easy to use and work well in your work environment. Our Histology product line currently includes Tissue Embedding Center, H&E Slide Stainer, Frozen Section Stainer for Mohs Labs, Floatation Water Bath and Paraffin Dispenser. Our products are designed and built in Warrington, Pennsylvania, USA.

217 Sakura Finetek USA, Inc. (Sponsor)

1750 W. 214th St.
Torrance, CA 90501
P (800) 725-8723
ahammer@sakuraus.com
www.sakuraus.com

Come to the Sakura booth to experience the power of high productivity, quality and ease of use. We present our high-performance OCT Compound, super-thin Cryomolds, sharp Accu-Edge® blades and the first and only Mohs cryostat with the features you always desired: Tissue-Tek® Cryo3® Flex Cryostat Mohs.

301 Surgical Specialties Corporation (Gold Sponsor)

50 Braintree Hill Office Park, Suite 101
Braintree, MA 02184
P (877) 991-1110
bmatthews@surgicalspecialties.com
www.surgicalspecialties.com

Quill™ Knotless Tissue-Closure Device allows Mohs surgeons to eliminate tying suture knots in wounds, including high-tension areas. Through its unique barbed design, it can approximate tissue and evenly distribute tension along the incision. The Quill device has also demonstrated time and cost savings when compared to traditional suture.

118 SurgiTel/General Scientific Corporation

77 Enterprise Drive
Ann Arbor, MI 48103
P (800) 959-0153
F (734) 662-0520
susant@surgitel.com
www.surgitel.com

SurgiTel is the manufacturer of premium loupes and headlights sold around the world from their headquarters in Ann Arbor, Michigan. Holding a variety of patents, SurgiTel is always on the forefront of vision and ergonomics.

Exhibitor Listing

118 SUTUREGARD Medical, Inc.

4640 SW Macadam Ave.
Portland, Oregon
P (844) 585-8421
sales@suturegard.com
www.suturegard.com

The SUTUREGARD™ Rapid Intraoperative Tissue Expansion devices enables more Mohs defects to be closed without flaps, grafts or second intent healing.

313 The Skin Cancer Foundation (Sponsor)

149 Madison Ave., Suite 901
New York, NY 10016
P (646) 583-7988
bhanley@skincancer.org
www.skincancer.org

The Skin Cancer Foundation is the only global organization solely devoted to the prevention, early detection and treatment of skin cancer. The mission of the Foundation is to decrease the incidence of skin cancer through public and professional education and research. Since its inception in 1979, the Foundation has recommended following a complete sun protection regimen that includes seeking shade and covering up with clothing, including a wide-brimmed hat and UV-blocking sunglasses, in addition to daily sunscreen use.

327 Travel Tech Mohs Services

1300 223rd. St., #411
Carson, CA 70745
P (310) 328-7846
karen@gotmohs.com
www.gotmohs.com

Travel Tech Mohs Services, Inc. is a histology technician service specializing in Mohs Micrographic Surgery. We provide all the machinery as well as a skilled professional in Mohs histology. Our team of Mohs technicians have been providing the highest quality Mohs frozen sectioning available for the past 20 years.

219 Vector Surgical

20975 Swenson Drive, Suite 430
Waukesha, WI 53186
P (262) 798-7970
jennifer.passon@vectorsurgical.com
www.vectorsurgical.com

Vector Surgical is the global leader in tissue orientation devices that provide the most accurate designation of excised tissue margins in cancer surgery. Our devices integrate the needs of surgeons, pathologist and radiologists, providing tools that enable the highest level of care for their cancer patients. Leading hospitals and physicians are eliminating error and improving outcomes with our products: MarginMarker sterile ink kits, CorrectClips radiographic clips and the SilversteinWrap.

216 Virginia Commonwealth University (VCU)

PO Box 980620
Richmond, VA 23298
P (804) 382-6981
karen.knicely@vcuhealth.org
www.vcuhealth.org

Well-established academic dermatology practice seeking a Mohs surgeon to join the practice in Richmond, Virginia to treat a high patient volume in a state-of-the art surgical suite comprised of eight large procedure rooms with the assistance of well-trained, supportive staff and three histotechnologists.

314 West Virginia University (WVU) Medicine

1 Medical Center Drive
Morgantown, WV 26501
P (304) 598-6278
belchera@wvumedicine.org
www.wvumedicine.org

WVU Medicine is WV's largest private employer, and a national leader in patient safety and quality. WVU Medicine includes the physicians, specialists, and sub-specialists of the WVU School of Medicine anchored by its flagship hospital, J.W. Ruby Memorial Hospital in Morgantown, a 700+ bed academic medical center.

211 Zero Gravity Skin

940 Lincoln Rd. #307
Miami Beach, FL 33139
P (404) 774-2577
natalia@zerogravityskin.com
www.zerogravityskin.com

Zero Gravity Skin specializes in unique LED medical devices approved by the FDA and based on NASA science.

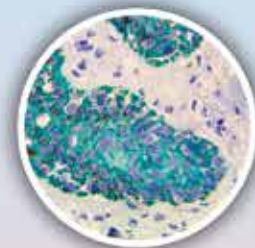
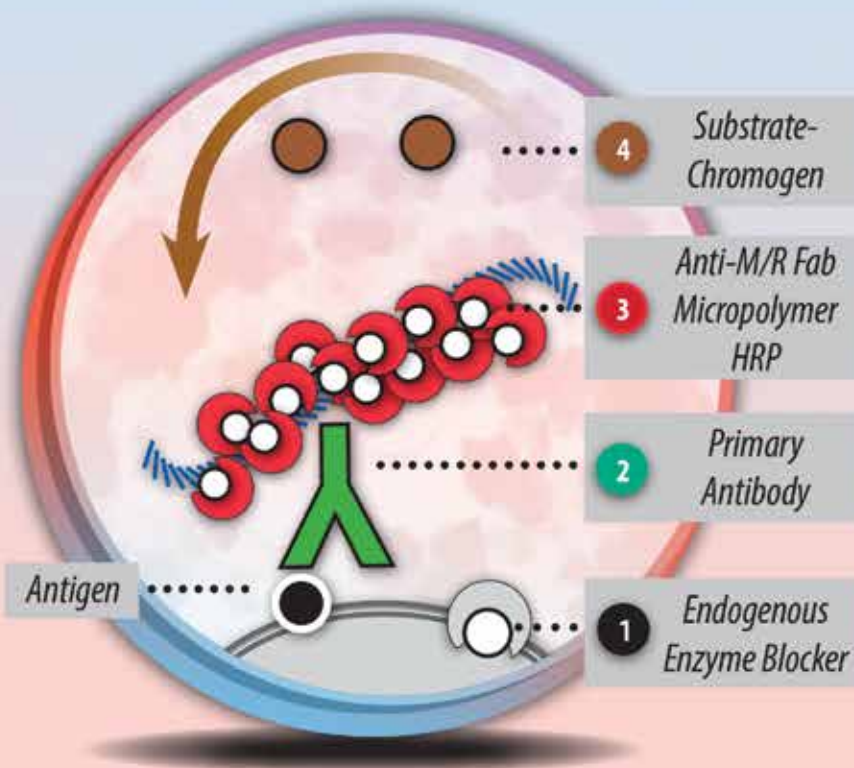
RELIABLE IHC RESULTS IN JUST 5-10 MINUTES!

STOP BY BOOTH #103 FOR A DEMONSTRATION!

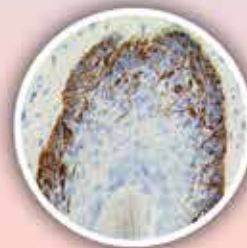
✓ FAST

✓ RELIABLE

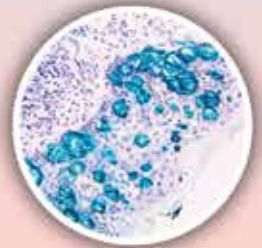
✓ AFFORDABLE



CK AE1 / AE3
HRP Green



MART-1
DAB HRP Brown



CK 7
HRP Green



5-10 Minute IHC!

BCC, SCC and Lymphoepithelioma-like Carcinoma Antibodies

| | |
|---------------------------------|----------|
| Cytokeratin 5/6 | DB5/16B4 |
| Cytokeratin Cocktail, AE1 & AE3 | AE1/AE3 |
| Cytokeratin MNF116 | MNF116 |
| EpCAM BerEP4 | Ber-EP4 |

Dermatofibrosarcoma Protuberans (DFSP) Antibodies

| | |
|------|----------|
| CD34 | QBEND/10 |
|------|----------|

Melanoma Antibodies

| | |
|--------|--------|
| MART-1 | A103 |
| MiTF | C5/D5 |
| SOX-10 | BSB-62 |

Mucinous Carcinoma Antibodies

| | |
|--------------------|--------|
| Cytokeratin CAM5.2 | CAM5.2 |
|--------------------|--------|

Paget's Disease Antibodies

| | |
|---------------|------------|
| Cytokeratin 7 | OV-TL12/30 |
|---------------|------------|

