

28TH ASMH ANNUAL MEETING

MAY 13–14, 2022



MARRIOTT PHILADELPHIA
DOWNTOWN PHILADELPHIA, PA

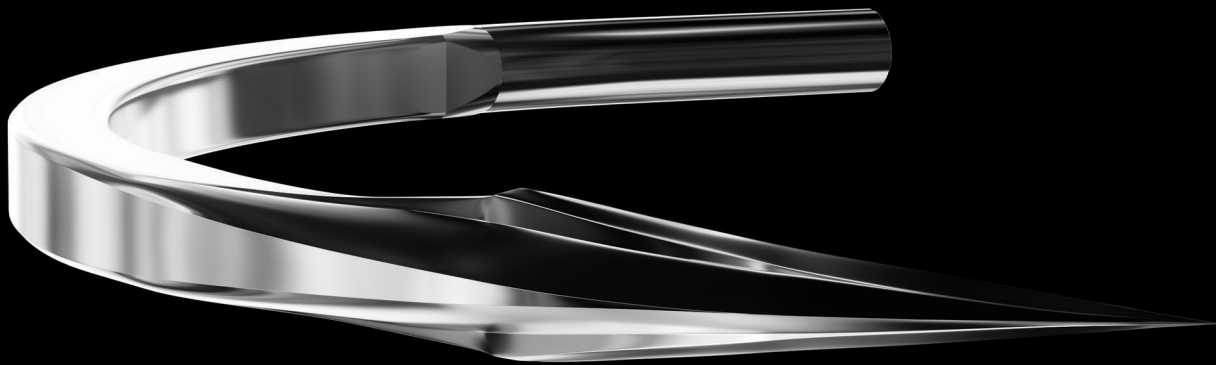
FINAL PROGRAM

ASMH
American Society for
Mohs Histotechnology

www.mohstech.org/annualmeeting/2022

Sharppoint SURGICAL
SUTURE

No compromise required.
Experience remarkable suture
performance and exceptional value.



Our **UltraGlide**[®] needles provide effortless control, reducing surgeon fatigue.

**Join us at the Suture Bar.
Booth #207**



corza.com • 1.877.991.1110 • Service@corza.com

Table of Contents

General Meeting Information.....	2
Special Events.....	2
2021-2022 Officer and Board Roster.....	3
2021-2022 ASMH Committees.....	3
Welcome Messages.....	6
ASMH 2021-22 New Members.....	7
Program at a Glance.....	10
Hotel & Tourist Information.....	13
Philadelphia Marriott Downtown Floor Map.....	14
Scientific Program Schedule.....	16
Pre-Conference Workshops – Thursday, May 12.....	16
Scientific Program – Friday, May 13.....	17
Scientific Program – Saturday, May 14.....	18
Cryostat and Immunohistochemistry Workshop Details.....	19
Annual Meeting Speakers, Presenters & Supporters.....	20
Exhibit Hall Floor Plan.....	21
Exhibitor Listing.....	22



© 2022
American Society for Mohs Histotechnology

No part of this publication may be reproduced without the prior written permission of the ASMH. Photos courtesy of iStock.

American Society for Mohs Histotechnology
555 East Wells Street, Suite 1100
Milwaukee, WI 53202-3823

Phone: (414) 918-9813
Fax: (414) 276-3349
Email: info@mohstech.org
Website: www.mohstech.org



General Meeting Information

On-Site Registration

The ASMH Registration Desk will be open at the Philadelphia Marriott Downtown on the following days and times (subject to change):

Wednesday, May 11: 1:00 pm - 5:00 pm
Thursday, May 12: 6:30 am - 5:00 pm
Friday, May 13: 6:30 am - 5:00 pm
Saturday, May 14: 6:30 am - 4:00 pm

Contact Hours

The National Society for Histotechnology (NSH) approved the ASMH 28th Annual Meeting for Continuing Education Unit Contact Hours. Meeting attendees are responsible for signing in on the Attendance Record form at the Registration Desk, as well as tracking their session attendance and reporting it directly to the NSH for contact hour credit. There is no fee for this service. Visit www.nsh.org/career/track-hours to access the contact hour portal. Additional information regarding the portal may be found on the Contact Hour Tracking Sheet in your registration packet. NSH can be reached at (443) 535-4060 or histo@nsh.org.

Certificate of Participation

Following the Annual Meeting, you will receive a link to complete a meeting evaluation and receive your Certificate of Participation.

Use of Mobile Devices

Please ensure that mobile phones, pagers or other electronic devices are silenced or turned off during all sessions.

Lost & Found

Please notify staff at the ASMH Registration Desk if you have lost or found an item during the course of the meeting.

Special Needs

The ASMH wishes to ensure that no individual with a disability is excluded, denied services, segregated, or otherwise treated differently than other individuals because of auxiliary aids and/or service(s). If you need an auxiliary aid or service(s) identified in the Americans with Disabilities Act, or if you have any health issues for which you may require special accommodations or assistance, please notify the ASMH staff at the Registration Desk.

Photography and Recording Policy

Photography or video or audio recording of sessions, materials presented in session, or exhibits without express written permission from the ASMH is strictly prohibited. Any photos, video or audio taken by or on behalf of the ASMH of the meeting activities and attendees shall be property of the ASMH.

There will be a professional photographer onsite documenting the meeting and social events. By attending the meeting, you agree to be photographed. Photos may be used in future promotional materials, ASMH publications, websites and social media, or other formats controlled by the ASMH.

Restriction on Minors

Children under 18 years of age are NOT permitted to enter the Exhibit Hall at any time during the meeting. This restriction includes installation, exhibition and dismantling hours. If children are present, they will be required to leave the Hall immediately.

Special Events

Friday, May 13

Networking Reception

Franklin Hall, Level 4

5:00 - 6:30 pm

A networking reception will take place from 5:00 – 6:30 pm in the Exhibit Hall. Light hors d'oeuvres will be served, along with beer, wine, and soda. Please join us to meet and network with fellow attendees and exhibitors.

Saturday, May 14

ASMH Business Meeting (ASMH Members Only)

Liberty Ballroom

8:45 - 9:45 am

ASMH members are encouraged to attend the annual membership Business Meeting. This important meeting brings members up-to-date on issues of significance.

Professional Headshots

Available FREE to all meeting attendees (optional). On Saturday, May 14 from 12:00 – 2:00 pm in the Exhibit Hall, professional headshots will be taken by our photographer. All photos will be taken on a first-come, first-served basis until 2:00 pm.

2021-2022 Officer and Board Roster

President

Daniel H. Gong, MS, MBA, C-PM, CWMP

Vice President

Lindsey E. Riggs, HTL

Secretary-Treasurer

Angelic R. Maden, MS, HT (ASCP)^{cm}

Past President

M. Maureen Gagnot, HT (ASCP)

Board of Directors

Linda R. Cesario, DPM, HT (ASCP)

Melinda M. Chow, MS, HT (ASCP)^{cm}

Ryan P. Reusch, HT (ASCP)

ACMS Representative

Daniel B. Eisen, MD, FACMS

2021-2022 ASMH Committees

Program Committee

Linda R. Cesario, DPM, HT (ASCP), Chair

Cristina Terteac, HT (ASCP), Co-Chair

Zipporah Cassidy

Norma L. Anderson, HT (ASCP)

Nathan C. Engweiler, CDT

Daniel H. Gong, MS, MBA, C-PM, CWMP

Angelic R. Maden, MS, HT (ASCP)^{cm}

Lindsey E. Riggs, HTL

Robert Tagliaferro, HT (ASCP)^{cm}

Jansen R. Tsakos, HT, HTL (ASCP)

Jeanie Wade, HT (ASCP)

Mohs Technician Trainers

Norma L. Anderson, HT (ASCP)

Joyce L. Bidwell, MA

Linda R. Cesario, DPM, HT (ASCP)

Susan L. Cushing

Daniel H. Gong, MS, MSO, C-PM, CWMP

Marci L. Lorio, RMA

Reginald M. Manney

Marilyn McCulloch, CLT

Stephanie S. Petrow

Ana I. Santos, CMA

Thomas E. Sturm, HT (ASCP)

Mohs Technician Training Program

Linda R. Cesario, DPM, HT (ASCP) - Director

Daniel H. Gong, MS, MBA, C-PM, CWMP - Associate Director

WiFi Connection Instructions

To access the Internet in meeting spaces:

1. Go to the wireless settings on your device.
2. Select the network SSID "2022ACMS" and connect.
If you are using a mobile device, a portal page will open automatically in your web browser. If you are using a laptop, you may need to launch a browser for the portal page to appear.
3. On the portal page, enter the access code "fredmohs" to log in.

NOTE: The complimentary wireless service available in guest rooms uses a different network SSID and access code than noted above for the meeting spaces.

Whitelist info@mohstech.org!

To ensure you receive important communications from the ASMH including information regarding the Annual Meeting, messages from the President, the e-Newsletter, member surveys and more, add info@mohstech.org to the Safe Senders list in your email account. If you think you may not have received messages from the ASMH, check your Spam or Junk Mail folder and 'whitelist' info@mohstech.org right away!



Visit Avantik at Booth 101 For Exclusive ACMS Specials

Confidence Comes from Being In Control

When you have the right equipment, service and supplies, your Mohs workflow goes precisely as planned. Achieve consistent and reliable results with Avantik's QS12 cryostat – Perfect Sections Every Time.

With Avantik as your single source provider for Mohs, you'll have the confidence for optimal patient care.

AVANTIK

Lab Set-Ups

Lab Design

Lab Equipment

Lab Consumables

Mohs Technician Training



SCAN THE QR CODE BELOW TO SPEAK TO A MOHS SPECIALIST TODAY



800.783.9424
avantik.com

 **AVANTIK**
A HIGHER STANDARD



GUIDED BY INNOVATION.

Castle Biosciences is proud to support the ACMS and its residents with innovative approaches to improve patient care. Together we help the next generation of physicians push the boundaries of what's possible. Driven by a shared purpose, we are transforming the treatment of dermatological cancers, enabling more precise testing for better informed decisions.

Precise. Personalized. Proven.

CastleTestInfo.com



Decision Dx
► SCC

Welcome from the President

Dear Colleagues,

On behalf of the Board of Directors, I welcome you to Philadelphia, PA – a very historical city for our first in-person Annual Meeting in over two years! I'm so excited we will have an opportunity to be meeting in person this year. I would like to extend a warm welcome to all our new members, as well as our returning members.

I would like to acknowledge our Program Committee Chair, Linda Cesario, Co-Chair, Christina Terteac, and the Program Committee for their outstanding work on the Program this year. The Program Committee has worked hard to provide, once again, an outstanding and comprehensive program which appeals to all levels of Mohs technical experience. Much gratitude goes to the numerous volunteers who have eagerly jumped in to help wherever they are needed. Everyone has done an outstanding job! My sincere thanks to Mary Randall, our Executive Director, and the rest of the staff at Executive Director Inc., whose extensive planning and organizing will make this in-person Annual Meeting an event to remember.

In addition to the educational knowledge and technical experience we take away from these conferences, we will be able to network and connect with one another in person this year. Do not miss the ever-popular Networking Reception which will be held on Friday evening in the Exhibit Hall. Be sure to take the opportunity to visit our vendors and see the latest ideas, devices or services that may benefit your practice or your lab. Many thanks to our vendors who continue to make our Annual Meetings possible. Also, if you are an ASMH member, please be sure to attend the Business Meeting on Saturday for the year in review.

As we continue to reopen from a pandemic, we are continuing to advance our Society. The shift to virtual platforms will only help build the strong foundational momentum that was laid down in previous years. It is an exciting time to continue to be a member of the ASMH. The in-person Mohs Technician Training Program will offer a training opportunity June 16-17, 2022, at the Mercedes Medical Campus in Sarasota, FL. This is exciting news as we look to continue growing our Mohs Technician Training Program in conjunction with our educational industry partners.

It has been a pleasure and honor being your President, and I appreciate your continued support in growing this great Society. Every member of the Society is highly valued; please join each other in our networking sessions to celebrate our Society and all that we do for our patients daily.

Enjoy the meeting!

Sincerely,

Daniel Gong, MS, MBA, C-PM, CWMP
President, ASMH
President@mohstech.org



Welcome Messages

Welcome from the Program Chairs

Hello from Philly!

On behalf of the Program Committee, it is our pleasure to welcome you to the ASMH 28th Annual Meeting in historic Philadelphia, PA. We would like to take the time to recognize the significance and importance of this year's meeting, as it is the first time in three years that we have been able to come together in person, making our networking component extra special this year. Though it has been incredibly difficult, we recognize our community's adaptability and ceaseless spirit as we utilized virtual methods and social media to stay connected to one another.

We created a comprehensive program this year including an extra focus on IHC. The program has a nice blend of ASMH and ACMS presenters, giving our program a great balance of information. The pre-conference workshops are back by popular demand as well as the traditional workshops held during the General Session. As always, there are many fun and educational presentations to help our community grow and to learn from each other.

Welcome to the ASMH Annual Meeting and the City of Brotherly Love. Sit back and enjoy!

Linda Cesario, DPM, HT (ASCP), Program Committee Chair
Cristina Terteac, HT (ASCP), Program Committee Co-Chair



Linda R. Cesario,
DPM, HT (ASCP),
Chair



Cristina Terteac,
HT (ASCP), Co-Chair

ASMH 2021-22 New Members

As of March 31, 2022

Liang Akemi
Janisca D. Allen
Candice R. Athilingtam, HT
Nicole Bennett
Connie M. Bruns
Destiny Burks
Krista D. Collins
Nathan C. Engweiler
Anna Fahnle
Riaprinesita Fines
Jillian Garrett
Kathleen Gillen
Victoria J. Glaser
Thabata Goes
Holly A. Green, MA
Taylor Green

Mason R. Groh
Melissa D. Hartmann, HTL
Abraham D. Ibarra
Veronica C. Insley
Nicholas P. Jorgenson
Alyssa K. Kepner
Jenny C. Kim
Edwin Lebron
Trisha L. Lewis
Margaret Masse
Tina Matteson
Jaclyn Metzler
Maylen Mousett
Victoria H. Mozo
Hung Ngo, MA
Kimberli Norris
Allison P. Odenthal

Janie Ou Yang
Bre A. Perez
Amber C. Phillips
Cindy Pressley
Deana R. Reinhart
Leisa A. Rowe
Mary Sarni
Jessica Schiers
Jennifer R. Sheehan
Amanda Soccorsi
Nicole Taylor
Amber E. Tribley
Rebecca M. Tubaugh
Timothy J. Wilson
Lillian G. Worley
Charity T. Wyatt



George Tiemann & Co.

Surgical Instruments • Since 1826

Supercut Tungsten Carbide Scissors

The Tiemann Supercut Tungsten Carbide Scissors combine the hardness of the Tungsten Carbide and the sharpness of the Supercut scissors.



105-0930

Zitelli Supercut & Tungsten Carbide, curved, delicate, sharp tips, serrated edge 4 1/2"

105-0931

Zitelli Supercut & Tungsten Carbide, straight, delicate, sharp tips, serrated edge 4 1/2"



105-407SC-TC

Iris Supercut & Tungsten Carbide, serrated edge, 4 1/2" curved

105-540SC-TC

Supercut & Tungsten Carbide Baby Metz, curved, serrated 4 1/2"



105-580SC-TC

Supercut & Tungsten Carbide, Stevens Tenotomy, curved, blunt 4 1/2"

"These scissors are like Goldilocks - not too big not too small - just right! I like sharp tips to initiate undermining. I like straight blades to undermine and elevate even thickness flaps. I like the strong blades that can handle scar tissue, yet small enough for fine work. Finally, I like how they are sharp and stay sharp."

- John Zitelli, M.D.

Get the Annual Meeting App!

www.eventmobi.com/app/asmh22

The Annual Meeting app is optimized for all devices—phones, tablets and laptops—across mobile platforms like iOS, Android and Windows. Get real-time notifications, respond to live polls, download handouts, complete session evaluations, and sign in to create a custom schedule, save notes, or connect with colleagues.

1. **Visit www.eventmobi.com/app/asmh22**

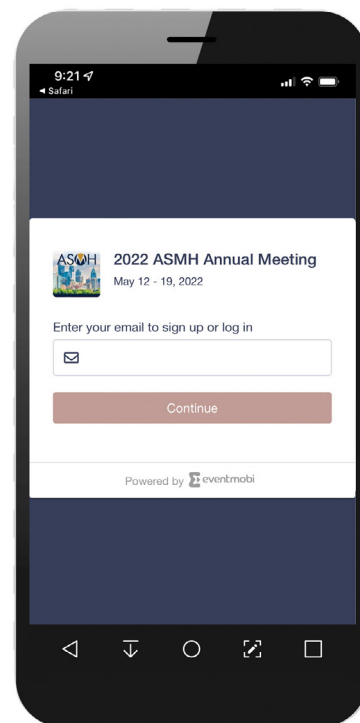
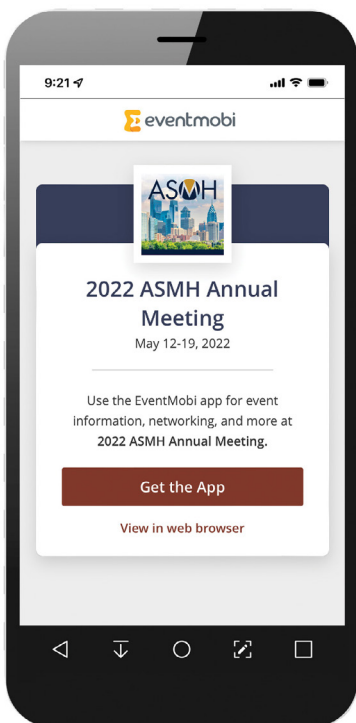
Tap “Get the App” button. The app will automatically download from your app store and launch the event.

2. Tap “Login” at the upper right. Enter the email address you used to register for the meeting; this allows full use of all features.



NOTE: EventMobi’s orange “E” icon will appear on your home screen; use this to access the app throughout the meeting.

If you choose to view the app in a web browser, follow the on-screen prompts to add the app icon to your home screen. Bookmark and return to www.eventmobi.com/asmh22.



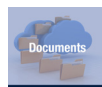
Features



Tap a session for description, time, location, speakers, handouts & more



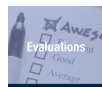
View faculty and panelists, as well as guest speaker bios



Handouts, slide decks & other information shared by speakers



WiFi instructions, special event details, links & much more



Complete session and meeting evaluations quickly and seamlessly



Find colleagues, edit your profile, connect via 1-1 or group chat



View a listing of exhibitors by category or booth location



Hotel, meeting space & Exhibit Hall floor plans



Share your experience via social media

Program at a Glance

Wednesday, May 11		
1:00 – 5:00 pm	Registration/Information Desk Open	Grand Ballroom, Level 5
Thursday, May 12		
6:30 am – 5:00 pm	Registration/Information Desk Open	Grand Ballroom, Level 5
8:45 am – 4:15 pm	Pre-Conference Workshops	
8:45 – 10:15 am	Tippling Your Cap for CAP: Tips on How to Make Inspections Go Smoothly <i>Angelic R. Maden, MS, HT (ASCP)^{cm}; Lindsey E. Riggs, HTL</i>	Meeting Room 407
8:45 – 10:15 am	Immunohistochemistry <i>Sakina A. Sadiq, BS, HT, HTL, QIHC</i>	Meeting Room 408
10:30 am – 12:00 pm	Beginner Cryostat <i>Robert Tagliaferro, HT (ASCP)^{cm}</i>	Franklin 2
10:30 am – 12:00 pm	Theory and Procedures for Routine Staining of Mohs Slides <i>Melinda M. Chow, MS, HT (ASCP)^{cm}</i>	Meeting Room 414
12:00 – 1:00 pm	Lunch	Franklin Hall, Level 4
1:00 – 2:30 pm	Understanding Regulatory Standards and the Survey Process <i>Camille J. McKay, M.Ed, BSHCA, HTL, CLT; Robert Tagliaferro, HT (ASCP)^{cm}; Kishwer S. Nehal, MD, FACMS; Kalee Shah, MD</i>	Meeting Room 407
1:00 – 2:30 pm	Advanced Cryostat <i>Lindsey E. Riggs, HTL</i>	Franklin 1
2:45 – 4:15 pm	Relaxing Tissue and the Slide Method <i>Norma L. Anderson, HT (ASCP)</i>	Franklin 2
2:45 – 4:15 pm	The A to Z of Mohs Procedures: Technical Guidance on Potential Pitfalls <i>Guy F. Orchard, PhD, MSc, FIBMS; Mohammad Shams, Bsc, Msc (Biomedical science)</i>	Meeting Room 414
Friday, May 13		
6:30 am – 5:00 pm	Registration/Information Desk Open	Grand Ballroom, Level 5
7:30 – 9:30 am	General Session 1 (2 CEU)	
7:30 am	Welcome and Opening Remarks <i>Daniel H. Gong, MS, MBA, C-PM, CWMP, ASMH President</i>	Liberty Ballroom
7:30 – 8:00 am	Staining 101 <i>Brandon W. Possum</i>	Liberty Ballroom
8:00 – 8:30 am	Immunohistochemistry on Mohs Sections <i>Evans Bailey, MD, PhD, FACMS</i>	Liberty Ballroom
8:30 – 8:45 am	Pearls for Running an Efficient Mohs Laboratory - Review of CAP and CLIA <i>Dennison R. Hoxie, BA, HTLC</i>	Liberty Ballroom
8:45 – 9:00 am	Building Logs that Matter: The Intersection of Log Systems, Staff Training, and Compliance <i>Angelic R. Maden, MS, HT (ASCP)^{cm}</i>	Liberty Ballroom
9:00 – 9:30 am	Understanding the Gray Areas of Regulatory Standards <i>Camille J. McKay, M.Ed, BSHCA, HTL, CLT</i>	Liberty Ballroom
9:30 am - 6:30 pm	Exhibit Hall Open	Franklin Hall, Level 4
9:30 – 9:45 am	Break	Franklin Hall, Level 4

Program at a Glance

Friday, May 13, continued		
9:45 am – 12:15 pm	General Session 2 (2.5 CEU)	
9:45 – 10:15 am	Nail Malignancies: Optimizing Mohs Outcomes in the Lab and at the Microscope <i>Thomas J. Knackstedt, MD, FACMS</i>	Liberty Ballroom
10:15 – 10:45 am	Rubber Cement Technique - A Novel Approach to Embedding Mohs Specimens <i>Sharon D. Oldanie, HT, HTL (ASCP)</i>	Liberty Ballroom
10:45 – 11:15 am	Transitioning from Routine Histology to Mohs Histology <i>Anasthasia Dukhnina</i>	Liberty Ballroom
11:15 – 11:45 am	How to Write a Scientific Paper <i>Angelic R. Maden, MS, HT (ASCP)^{cm}</i>	Liberty Ballroom
11:45 am – 12:15 pm	TBD <i>Paul H. Bowman, MD, FACMS</i>	Liberty Ballroom
12:15 – 1:15 pm	Lunch	Franklin Hall, Level 4
1:15 – 3:15 pm	General Session 3 (2 CEU)	
1:15 – 1:45 pm	Pushing the PRAME – Updates on Malignant Melanoma Immunocytochemistry <i>Guy E. Orchard, PhD, MSc, FIBMS</i>	Liberty Ballroom
1:45 – 2:15 pm	Dermatofibrosarcoma Protuberans <i>Karen Connolly, MD, FACMS</i>	Liberty Ballroom
2:15 – 2:45 pm	Margin Threshold in Mohs Surgery: What Makes a Clear Margin? <i>William H. Phillips; Kalee Shah, MD</i>	Liberty Ballroom
2:45 – 3:15 pm	Mohs Surgery with MART-1 Immunostains for Melanoma <i>David G. Brodland, MD, FAAD, FACMS</i>	Liberty Ballroom
3:30 – 5:00 pm	Workshop - Beginner Cryostat (see pg. 7 for description) <i>Robert Tagliaferro, HT (ASCP)^{cm}</i>	Franklin 2
3:30 – 5:00 pm	Workshop - Advanced Cryostat (see pg. 7 for description) <i>Lindsey E. Riggs, HTL</i>	Franklin 1
5:00 – 6:30 pm	Networking Reception – Exhibit Hall	Franklin Hall, Level 4
Saturday, May 14		
6:30 am – 4:00 pm	Registration/Information Desk Open	Grand Ballroom, Level 5
7:00 – 8:30 am	Workshop - Advanced Cryostat (see pg. 7 for description) <i>Lindsey E. Riggs, HTL</i>	Franklin 1
7:00 – 8:30 am	Workshop - Immunohistochemistry (see pg. 7 for description) <i>Sakina A. Sadiq, BS, HT, HTL, QIHC</i>	Meeting Room 408
8:45 – 9:45 am	ASMH Business Meeting (members only)	Liberty Ballroom
9:30 am – 4:00pm	Exhibit Hall Open	Franklin Hall, Level 4
9:45 am – 12:15 pm	General Session 4 (2.5 CEU)	
9:45 – 10:15 am	When Words Don't Work: Tips, Tricks, Trials, and Tribulations to Navigating the Muddy Waters of Unclear Communication <i>Matthew T. Hoffman, MD, FACMS</i>	Liberty Ballroom
10:15 – 10:45 am	How to Develop a Strong Skillset <i>Camille J. McKay, M.Ed, BSHCA, HTL, CLT</i>	Liberty Ballroom
10:45 – 11:15 am	#MohsHacks <i>Linda R. Cesario, DPM, HT (ASCP); Cristina Terteac, HT (ASCP)</i>	Liberty Ballroom
11:15 am – 12:15 pm	Troubleshooting Open Forum <i>Linda R. Cesario, DPM, HT (ASCP); Cristina Terteac, HT (ASCP); Daniel H. Gong, MS, MBA, C-PM, CWMP</i>	Liberty Ballroom
12:15 – 1:15 pm	Lunch	Franklin Hall, Level 4

Program at a Glance

Saturday, May 14, continued		
1:15 – 2:45 pm	General Session 5 (1.5 CEU)	
1:15 – 1:45 pm	How to Promote the Field of Mohs Histotechnology <i>Camille J. McKay, M.Ed, BSHCA, HTL, CLT; Angela P. Yepes, HT</i>	Liberty Ballroom
1:45 – 2:15 pm	Tips for Whole Mount Sections <i>Zipporah Cassidy; Tara Garcia, HTL (ASCP)</i>	Liberty Ballroom
2:15 – 2:45 pm	Treatment of Cutaneous Squamous Cell Carcinoma with Perineural Invasion <i>Maressa Criscito MD</i>	Liberty Ballroom
2:45 – 3:00 pm	Break	Franklin Hall, Level 4
3:00 – 4:30 pm	General Session 6 (1.5 CEU)	
3:00 – 3:30 pm	Working with Difficult Tissue: Mending Holes and Other Things <i>Brandon W. Possum</i>	Liberty Ballroom
3:30 – 4:00 pm	What to do Before You Call the Dude <i>Matt Mincer, Tech One Biomedical LLC</i>	Liberty Ballroom
4:00 – 4:30 pm	Embedding Pitfalls: How to Analyze and Troubleshoot <i>Gil Genna Manuel, HT</i>	Liberty Ballroom
4:30 pm	Meeting Adjourned	

BE PART OF THE CONVERSATION!

Share your Annual Meeting experience on social media using #ASMH28th

Follow us:

 www.facebook.com/ASMHMohs

 [@ASMHMohs](https://twitter.com/ASMHMohs)

 [linkedin.com/company/american-society-for-mohs-histotechnology](https://www.linkedin.com/company/american-society-for-mohs-histotechnology)



Hotel

Philadelphia Marriott Downtown
1201 Market Street (guest entrance at 1200 Filbert Street)
Philadelphia, PA 19107
(215) 625-2900

Hotel website link available at www.mohstech.org/annualmeeting/2022

Check-in time: 4:00 pm; Check-out time: 11:00 am
Early check-in and late check-out are subject to availability and approval.

Parking

Valet parking: \$57.50 USD daily
Oversized vehicles: \$73.35
Limited on-site parking during special events and weekends.

Airport & Transportation

Philadelphia International Airport (PHL) • 10 miles from The Philadelphia Marriott Downtown

Transportation from Airport

Driving directions Travel east from the airport. Take the ramp for PA-291 East and continue to exit 13 to merge onto PA-291 East toward Interstate 76 West/Valley Forge. Turn left onto South 26th Street. Take the ramp onto Interstate 76 West. Follow Interstate 76 West to exit 344 to merge onto Interstate 676 East/US-30 East toward Central Philadelphia. Take the exit for Broad Street/Central Philadelphia. Make a slight left onto Vine Street. Keep right at the fork in the road and turn right onto North 12th Street. Proceed to Market Street and turn right to the hotel.

Philadelphia Weather

During early May: average high of 63°F; average low of 50°F

Policy on Pets and Service Animals

The Philadelphia Marriott Downtown, pets not allowed.

The ASMH prohibits pets in any meeting spaces, with the exception of service animals providing Americans with Disabilities Act (ADA) reasonable accommodations for a person with disabilities. According to the ADA, a service animal is defined as "any animal individually trained to work or perform tasks for the benefit of an individual with a disability, including, but not limited to, guiding individuals with impaired vision, alerting individuals to an impending seizure or protecting individuals during one, and alerting individuals who are hearing impaired to intruders, or pulling a wheelchair and fetching dropped items.

Attendees may be asked to provide proof of service animal status and/or licensure. Service animals must wear an owner identification tag (which includes the name and phone number of the owner) at all times. Animals must be on a leash, harness or other type of restraint at all times, unless the owner/partner is unable to retain an animal on leash due to a disability. The owner must be in full control of the animal at all times. The care and supervision of the animal is solely the responsibility of the owner/partner.

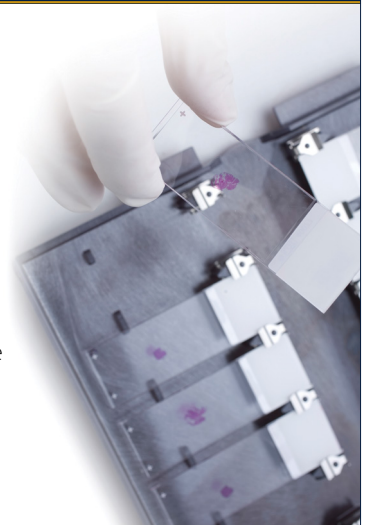
Advanced Mohs Technician Training

Thursday, June 16 – Friday, June 17, 2022 • 8:30 am - 3:30 pm
Mercedes Scientific – Lakewood Ranch, FL

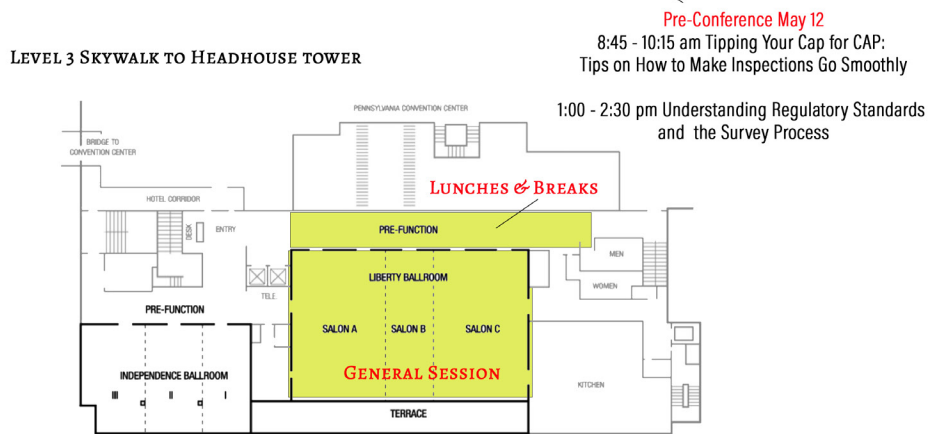
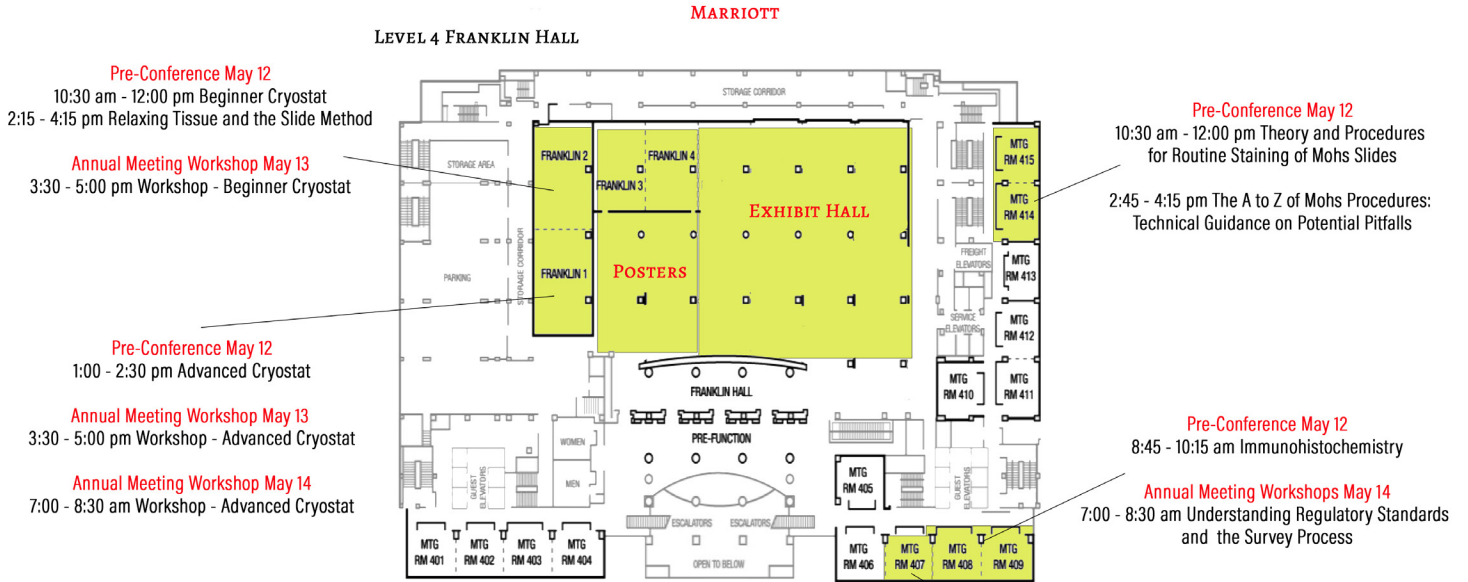
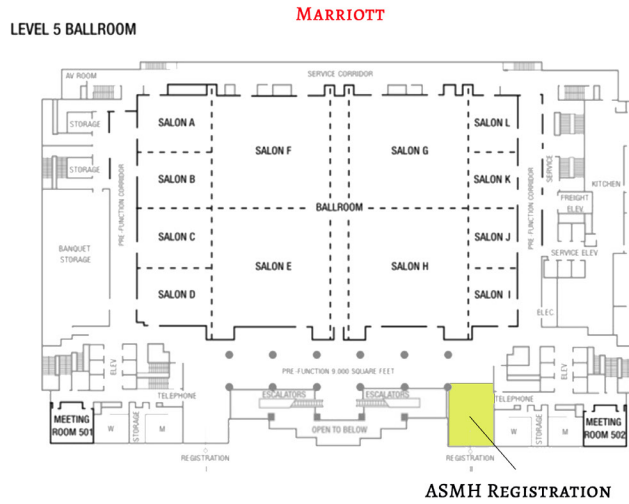
The ASMH offers customized, hands-on training sessions through its Advanced Mohs Technician Training Program. This on-site training will include lecture and hands-on training on topics such as mapping and inking, embedding, staining, cryosectioning, CLIA regulations, troubleshooting, and more. This program is designed to enhance both the performance and quality of work of established Mohs technicians - those with at least six months of experience in Mohs. *Please note that this training is not an official Histotech Certification program, nor is it intended for techs with no experience.*

Upon completion, trainees can claim 12 CEUs through the National Society for Histotechnology and will receive a certificate of completion from the ASMH/ACMS.

www.mohstech.org/training



Philadelphia Marriott Downtown Floor Map



Have job openings you're looking to fill?

- Easily target qualified professionals nationwide
- Promote jobs to active and passive job seekers through our Partner Network and distribute your jobs to other heavily trafficked job boards at no extra cost
- Feature your company logo on the career center homepage to increase click-through to your jobs by up to 38%

The new source for career opportunities uniquely tailored to your needs

- Search and find jobs in your field
- Sign up for customized job alerts
- Upload your resume and allow employers to easily find you

VISIT US HERE 



Pre-Conference Workshops – Thursday, May 12

8:45 – 10:15 am

Tipping Your Cap for CAP: Tips on How to Make Inspections Go Smoothly - Meeting Room 407

Angelica R. Maden, MS, HT (ASCP)^{cm}; Lindsey E. Riggs, HTL

This workshop will cover how to prepare for inspections, understand the difference between CAP and CLIA and how they work together while developing a structured format to ensure success. Bring your procedure manual questions with you to this workshop.

8:45 – 10:15 am

Immunohistochemistry - Meeting Room 408

Sakina A. Sadiq, BS, HT, HTL, QIHC

This workshop is designed to acquaint participants with how to stain Mohs frozen sections for immunohistochemistry.

10:30 am – 12:00 pm

Beginner Cryostat - Franklin 2

Robert Tagliaferro, HT (ASCP)^{cm}

Those new to Mohs histotechnology will receive direct guidance and advice from experienced workshop leaders on cryostat use in the Mohs lab, and time will be given to practice cutting techniques.

10:30 am – 12:00 pm

Theory and Procedures for Routine Staining of Mohs Slides - Meeting Room 414

Melinda M. Chow, MS, HT (ASCP)^{cm}

Hematoxylin and Eosin stain is considered the gold standard, which has been used for over a century for the clinical diagnosis in the histopathology laboratory. Since this is the most routine stain, we often overlook the problems associated with it. This workshop will provide an overview of the chemistry behind the mechanism of hematoxylin and eosin and how to troubleshoot the common problems associated with this stain. Understanding the causes/complaints of the problems and learning how to correct them will be the main focus of this workshop. The pros and cons in manual vs automated H & E staining and the future of routine staining will also be discussed.

1:00 – 2:30 pm

Understanding Regulatory Standards and the Survey Process - Meeting Room 407

Camille J. McKay, M.Ed, BSHCA, HTL, CLT; Robert Tagliaferro, HT (ASCP)^{cm}; Kishwer S. Nehal, MD, FACMS; Kalee Shah, MD

As Mohs laboratory professionals, it can be a difficult task to understand regulatory standards that are applicable to a Mohs laboratory. Adhering to the standards can be demanding due to the varying interpretations these surveyors apply to the unique practice of Mohs surgery. This workshop will join staff members of Memorial Sloan Kettering (MSKCC) with members of the American Society for Mohs Histotechnology (ASMH) to help bring clarity to this process.

1:00 – 2:30 pm

Advanced Cryostat - Franklin 1

Lindsey E. Riggs, HTL

An in-depth presentation on processing full-thickness wedge specimens, this workshop will also provide instructions on how to acquire a complete representative section of fatty (non-cutting) type tissue, how to manipulate the contours of cartilage and to transition epidermis to an even plane with the deep margin.

2:45 – 4:15 pm

Relaxing Tissue and the Slide Method - Franklin 2

Norma L. Anderson, HT (ASCP); Marilyn McCulloch, CLT

This workshop will focus on relaxing tissue in preparation for embedding using the Slide Method. A Power Point Presentation including videos demonstrating relaxing techniques and several variations utilizing the Slide Method will be shown; hands on training will follow.

2:45 – 4:15 pm

The A to Z of Mohs Procedures: Technical Guidance on Potential Pitfalls - Meeting Room 414

Guy F. Orchard, PhD, MSc, FIBMS; Mohammad Shams, Bsc, Msc (Biomedical science)

This workshop will focus on discussion and debate of participants' Mohs technical problems, along with suggested remedies. A presentation encompassing common artifacts seen in Mohs laboratories and how best to troubleshoot and avoid these occurring will also be given.

Scientific Program – Friday, May 13

7:30 – 9:30 am

General Session 1

Liberty Ballroom

7:30 am

Opening Remarks and Welcome

Daniel H. Gong, MS, MBA, C-PM, CWMP, ASMH President

7:30 - 8:00 am

Staining 101

Brandon W. Possum

The foundation of the H&E staining process used at Memorial Sloan Kettering Cancer Center's Koch Center Mohs lab will be presented, along with information on the types of reagents used, the flow of the automated staining setup and quality control methods in practice.

8:00 - 8:30 am

Immunohistochemistry on Mohs Sections

Evans Bailey, MD, PhD, FACMS

This session will cover the most important immunostains for Mohs surgery, including stains for melanoma and non-melanoma skin cancers. The basics of immunohistochemistry will be reviewed, as well as scenarios in which immunostains are needed in Mohs surgery.

8:30 - 8:45 am

Pearls for running an Efficient Mohs Laboratory - Review of CAP and CLIA

Dennison R. Hoxie, BA, HTLC

This session will cover a brief overview of the CAP and CLIA inspections, as well as the advantages and disadvantages of both and tips for a successful inspection.

8:45 - 9:00 am

Building Logs that Matter: The Intersection of Log Systems, Staff Training, and Compliance

Angelic R. Maden, MS, HT (ASCP)^{pm}

The foundation of the H&E staining process used at Memorial Sloan Kettering Cancer Center's Koch Center Mohs lab will be presented, along with information on the types of reagents used, the flow of the automated staining setup and quality control methods in practice.

9:00 - 9:30 am

Understanding the Gray Areas of Regulatory Standards

Camille J. McKay, M.Ed, BSHCA, HTL, CLT

The survey process is done to promote patient care and serves as an educational process to educate both parties that are involved. Sometimes in a Mohs laboratory you will encounter a survey process where you cannot find the answer to a question that is in a gray area. This presentation will provide an explanation of the gray areas in the survey process.

9:30 - 9:45 am

Break

Franklin Hall, Level 4

9:45 am – 12:15 pm

General Session 2

Liberty Ballroom

9:45 - 10:15 am

Nail Malignancies: Optimizing Mohs Outcomes in the Lab and at the Microscope

Thomas J. Knackstedt, MD, FACMS

Learning objectives: 1. Recognize the unique anatomic challenges of nail unit surgery. 2. Review tissue grossing, embedding, and the management of nail plate or bone fragments during nail unit Mohs surgery. 3. Discuss normal nail unit histology and common artefacts encountered in nail tissue processing.

10:15 - 10:45 am

Rubber Cement Technique - A Novel Approach to Embedding Mohs Specimens

Sharon D. Oldanie, HT, HTL (ASCP)

Being a Mohs tech is not always easy. This presentation is for those who feel challenged by having to work with specimens that are less than perfect. You will learn how to eliminate tangential cuts and overcome many obstacles in order to consistently produce beautiful slides with a complete epithelium. The innovative rubber cement technique will be demonstrated along with new tools you can use to help improve your results. We will cover how to cut fatty specimens. Automated and hand staining procedures will be distributed and many useful specimen processing tips will be shared. Designed to give you real solutions to your problems.

10:45 - 11:15 am

Transitioning from Routine Histology to Mohs Histology

Anastasia Dukhnina

Advantages and challenges of experience in routine histology when transitioning to Mohs histology laboratory. Expanding the boundaries of familiar procedures and discovering new histologic techniques

11:15 - 11:45 am

How to Write a Scientific Paper

Angelic R. Maden, MS, HT (ASCP)^{pm}

Learn the basics of writing and submitting a scientific paper. We will cover the types of submissions typically used for Mohs and how to find instructions for submission.

11:45 am - 12:15 pm

TBD

Paul H. Bowman, MD, FACMS

Scientific Program Schedule — Friday, May 13

12:15 - 1:15 pm

Lunch

Franklin Hall, Level 4

1:15 – 3:15 pm

General Session 3

Liberty Ballroom

1:15 - 1:45 pm

Pushing the PRAME – Updates on Malignant Melanoma Immunocytochemistry

Guy E. Orchard, PhD, MSc, FIBMS

An overview of new malignant melanoma antibody markers for use in Mohs. What do these markers tell us and how can they help in a diagnostic and therapeutic setting?

1:45 - 2:15 pm

Dermatofibrosarcoma Protuberans

Karen Connolly, MD, FACMS

In this session, we will discuss clinical and histopathological features of DFSP. Newer treatment modalities and rationale for using Mohs surgery will be reviewed. Topics of special interest to the histotechnologist including management of larger specimens will be covered.

2:15 - 2:45 pm

Margin Threshold in Mohs Surgery: What Makes a Clear Margin?

William H. Phillips; Kalee Shah, MD

Margin assessment during Mohs surgery is an interpretive process, and Mohs surgeons may disagree on what constitutes a positive margin. One area of disagreement concerns the status of clear peripheral sections that are followed by positive sections cut more central to the block. Depending on the Mohs surgeon's method of assessment, such a sequence may indicate a positive or negative margin. This study examined thirty-nine such cases to determine how many had residual tumor left at the surgical site, thereby confirming truly positive or negative margins.

2:45 - 3:15 pm

Mohs Surgery with MART-1 Immunostains for Melanoma

David G. Brodland, MD, FAAD, FACMS

Mohs surgery has become the gold standard for highly effective and efficient removal of most skin cancers. MART-1 immunostaining for melanoma is reviewed with helpful pearls for Histotechs.

Scientific Program Schedule — Saturday, May 14

9:45 am – 12:15 pm

General Session 4

Liberty Ballroom

9:45 - 10:15 am

When Words Don't Work: Tips, Tricks, Trials, and Tribulations to Navigating the Muddy Waters of Unclear Communication

Matthew T. Hoffman, MD, FACMS

We will discuss the basic forms of communication, and how each applies to the interpersonal relationship between histotechnologist and surgeon. I hope participants will leave with a fresh perspective on effective and efficient communication, tips to avoid miscommunication, and some real-world examples of communication either succeeding or falling flat.

10:15 - 10:45 am

How to Develop a Strong Skillset

Camille J. McKay, M.Ed, BSHCA, HTL, CLT

Working at a big institution, such as Memorial Sloan Kettering (MSKCC) and managing multiple regional laboratories and interacting with the different teams, I observed how different laboratories had certain skillsets that the other sites didn't. Having Mohs technicians visit other sites within MSKCC, I noticed strong skillsets being formed by the Mohs technicians. Another way to develop a strong skillset is by hosting an annual round table discussion,

where technicians from each regional site, histotechnicians and pathology assistants attended and presented to each other. This was a great way for each of the technical team to develop an even stronger skillset. During this presentation, Camille will share the many ways to develop a strong skillset.

10:45 - 11:15 am

#MohsHacks

Linda R. Cesario, DPM, HT (ASCP); Cristina Terteac, HT (ASCP)

This fun presentation of video snippets will demonstrate Mohs Hacks that can be used in Mohs labs to make your day a little easier. These Mohs pearls may be a great addition to your daily Mohs lab operation.

11:15 am - 12:15 pm

Troubleshooting Open Forum

Linda R. Cesario, DPM, HT (ASCP); Cristina Terteac, HT (ASCP)

Meeting attendees, both new and experienced, are encouraged to attend this open-format discussion for tips, tricks and techniques from fellow Mohs technicians. Questions and concerns can be submitted anonymously and dropped off in advance at the Registration Desk or presented in person during the forum.

12:15 - 1:15 pm

Lunch

Franklin Hall, Level 4

Scientific Program Schedule — Saturday, May 14

1:15 – 2:45 pm

General Session 5

Liberty Ballroom

1:15 - 1:45 pm

How to Promote the Field of Mohs Histotechnology

Camille J. McKay, M.Ed, BSHCA, HTL, CLT; Angela P. Yepes, HT

Recruiting qualified professional Mohs staff is an arduous task. A more difficult task is finding people interested in the Mohs profession. In this presentation we will discuss how to go about promoting the profession within your local community and how to generate interest from high schoolers.

1:45 - 2:15 pm

Tips for Whole Mount Sections

Zipporah Cassidy; Tara Garcia, HTL (ASCP)

Tips, tricks and more for embedding and cutting whole mount specimens for Mohs micrographic surgery using the reverse slide embedding method.

2:15 - 2:45 pm

Treatment of Cutaneous Squamous Cell Carcinoma with Perineural Invasion

Maressa Criscito, MD

High-risk cutaneous squamous cell carcinoma (cSCC) with perineural invasion (PNI) is associated with an increased risk of local recurrence, nodal metastases and disease-specific death. Treatment of cSCC with PNI may be challenging, albeit imperative, in an effort to prevent poor outcomes. The aim of this talk is to highlight the management strategy of cSCC with PNI.

2:45 - 3:00 pm

Break

Franklin Hall, Level 4

3:00 – 4:30 pm

General Session 6

Liberty Ballroom

3:00 - 3:30 pm

Working with Difficult Tissue: Mending Holes and Other Things

Brandon W. Possum

This topic will be primarily centered around embedding/grossing techniques and where they may be most applicable as well as troubleshooting for out of the ordinary Mohs layers, with a minor focus on sectioning bloody or fatty tissues.

3:30 - 4:00 pm

What to do Before You Call the Dude

Matt Mincer, Tech One Biomedical

This presentation will cover basic maintenance and repairs on cryostats that can be done before you have to call for service.

4:00 - 4:30 pm

Embedding Pitfalls: How to Analyze and Troubleshoot

Gil Genna Manuel

Embedding is a critical step in obtaining accurate sections in Mohs processing. In this presentation, different ways to troubleshoot embedding errors will be covered. The importance of embedding tissue correctly and will share some images during the presentation. During the presentation I will share the outcomes of incorrect embedding and how to relay these concerns to our Mohs surgeons.

Cryostat and Immunohistochemistry Workshop Details

The following workshops require a separate ticket for entry.

Beginner Cryostat

Franklin 2

Friday, May 13, 3:30 - 5:00 pm

Robert Tagliaferro, HT (ASCP)cm

Those new to Mohs histotechnology will receive direct guidance and advice from experienced workshop leaders on cryostat use in the Mohs lab, and time will be given to practice cutting techniques. Also offered on Thursday, May 12 from 10:30 am to 12:00 pm.

Advanced Cryostat

Franklin 1

Friday, May 13, 3:30 - 5:00 pm

Saturday, May 14, 7:00 - 8:30 am

Lindsey E. Riggs, HTL

An in-depth presentation on processing full-thickness wedge specimens, this workshop will also provide instructions on how to acquire a complete representative section of fatty (non-cutting) type tissue, how to manipulate the contours of cartilage and to transition epidermis to an even plane with the deep margin. Also offered on Thursday, May 12 from 1:00 to 2:30 pm.

Immunohistochemistry

Meeting Room 408

Saturday, May 14, 7:00 - 8:30 am

Sakina A. Sadiq, BS, HT, HTL, QIHC

This workshop is designed to acquaint participants with how to stain Mohs frozen sections for immunohistochemistry. Also offered on Thursday, May 12 from 8:45 to 10:15 am.

Annual Meeting Speakers, Presenters & Supporters

Thank You

ASMH expresses sincere appreciation to all speakers, session participants, and workshop volunteers for their contribution to the meeting program:

Speakers & Presenters

Norma Anderson, HT (ASCP)
Evans Bailey, MD, PhD, FACMS
Paul H. Bowman, MD, FACMS
David G. Brodland, MD, FAAD, FACMS
Zipporah Cassidy
Linda R. Cesario, DPM, HT (ASCP)
Melinda M. Chow, MS, HT (ASCP)^{cm}
Karen Connolly, MD, FACMS
Maressa Criscito, MD
Anastasia Dukhnina
Tara Garcia, HTL

Daniel H. Gong, MS, MBA, C-PM, CWMP
Matthew T. Hoffman, MD, FACMS
Dennison Hoxie, BA, HTLC
Thomas J. Knackstedt, MD, FACMS
Angelic R. Maden, MS, HT (ASCP)^{cm}
Gil Genna Manuel, HT
Camille J. McKay, M.Ed, BSHCA, HTL, CLT
Matt Mincer
Kishwer S. Nehal, MD, FACMS
Sharon D. Oldanie, HT, HTL (ASCP)
Guy E. Orchard, PhD, MSc, FIBMS

William H. Phillips
Brandon W. Possum
Lindsey E. Riggs, HTL
Sakina A. Sadiq, BS, HT, HTL, QIHC
Kalee Shah, MD
Mohammad Shams, Bsc, Msc
(Biomedical science)
Robert Tagliaffero, HT (ASCP)^{cm}
Cristina Terteac, HT (ASCP)
Angela Yepes, HT (ASCP)

ASMH Thanks Its Supporters

The American Society for Mohs Histotechnology gratefully acknowledges the following companies for their contributions and support to help underwrite the educational goals of the ASMH Annual Meeting.

Platinum Sponsors



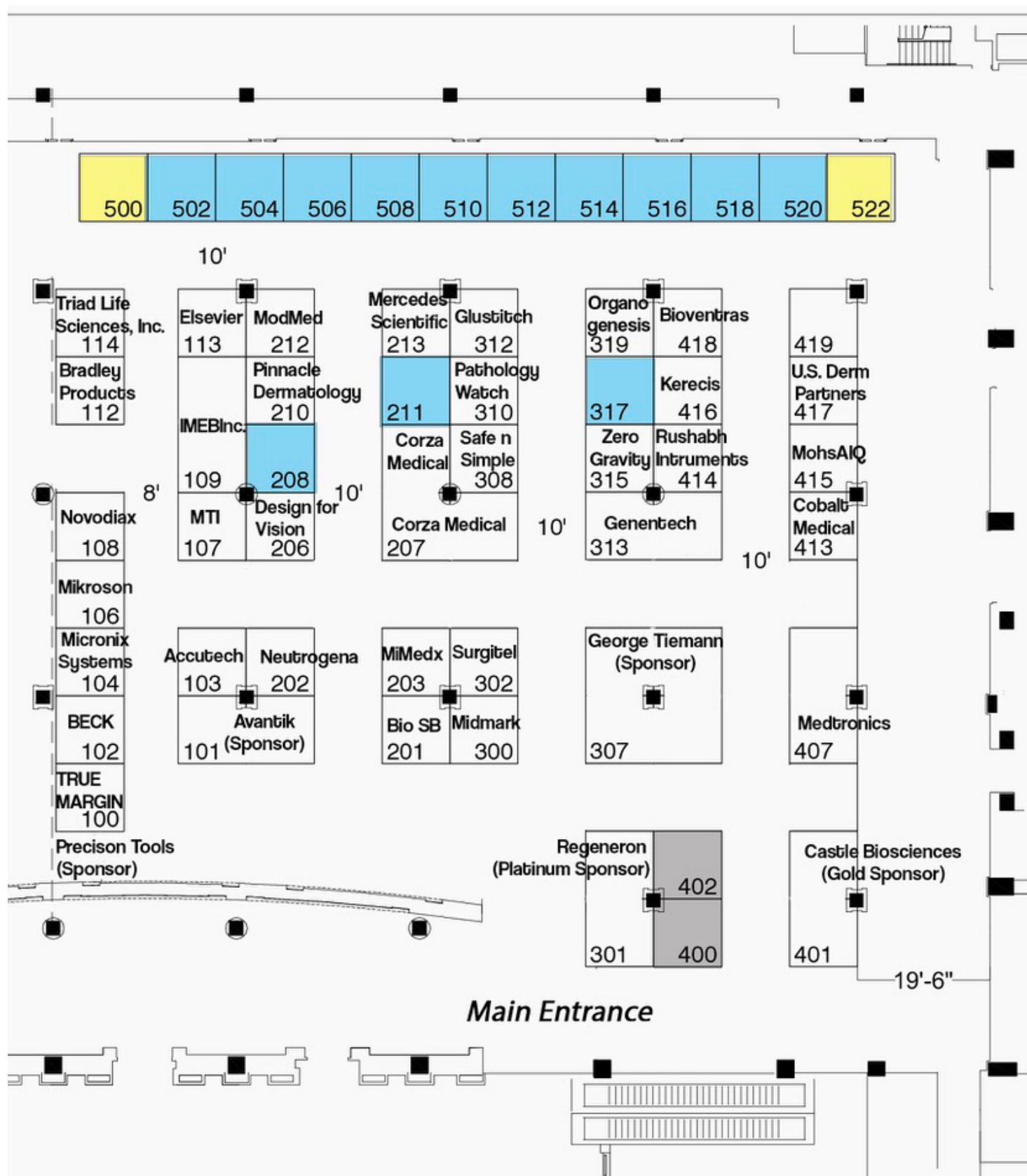
Gold Sponsor



Sponsor - Cryostat/Supplies



Exhibit Hall Floor Plan



Exhibitor Listing

(As of March 31, 2022)

Attendees are encouraged to visit the technical exhibits during the ASMH Annual Meeting. A variety of companies of interest to Mohs histotechnologists and surgeons will be displaying their products, equipment, and services. Please be sure to visit the Exhibit Hall to learn about their quality offerings.

Exhibit Hall Hours

Thursday, May 12: 9:30 am – 7:30 pm

Friday, May 13: 9:30 am – 6:30 pm

Saturday, May 14: 9:30 am – 4:00 pm

415 ACMS MohsAIQ Registry

(powered by ArborMetrix)

<https://www.mohscollege.org/members/mohsaiq-registry>

www.arbormetrix.com

The MohsAIQ registry (pronounced mosaic, stands for Mohs Surgery Advancing & Improving Quality), powered by ArborMetrix, will help the ACMS and its members demonstrate the value of Mohs surgery as patient-centered, timely, and highly effective. MohsAIQ will provide meaningful data about patients and physician performance in order to improve outcomes and maximize results under CMS payment models. ArborMetrix was founded by internationally-recognized surgeons and uses a technology platform purpose-built to support medical specialty society registries. We are proud to be the vendor of record for the ACMS registry, which will leverage our flexible technology infrastructure, advanced analytics, and interactive dashboards to support quality improvement initiatives and clinical research leading to the identification of best practices.

103 AccuTec Inc.

1 Razor Blade Lane

Verona, VA 24482

P (516) 330-4226

www.accuteccompany.com

With over a century of innovation in blades and bladed tools behind us, we have our eyes firmly focused on the future. We are constantly evolving our capabilities to meet the needs of health care providers, medical equipment manufacturers, and other advanced manufacturing enterprises. Our expertise crosses many fields. We are a proven global innovator in diverse areas: surgical, histological, food, fiber, and glass blades and bladed solutions.

101 Avantik (Sponsor)

19 Chapin Rd. Building C

Pine Brook, NJ 07058

P (800) 783-9424 ext. 192

www.avantik-us.com

Avantik is the #1 name in Mohs. Avantik offers total lab solutions with the revolutionary QS12 cryostat, quality guaranteed consumable goods, and outstanding warranty-backed remanufactured instruments. From Mohs lab design, to planning and set-up, to the industry's most responsive service and support network, and to unmatched educational programs with trusted industry partners, Avantik is THE choice in Mohs!

201 BIO SB, Inc.

69 Santa Felicia Dr.

Santa Barbara, CA 93117

P (805) 705-8398

www.biosb.com

Bio SB performs R&D, production, distribution of antibodies and detection systems for immunohistochemistry (IHC), including environmentally friendly ancillaries, unique IVD validated antibodies, detection systems and equipment. Our portfolio includes products for immunohistochemistry (IHC) immunocytochemistry (ICC), Immunofluorescence (IF), chromogenic in situ hybridization (CISH) and fluorescent in situ hybridization (FISH) technologies that meet the highest international standards for applications in molecular pathology, cancer research, microbiology, immunology and genetics. Bio SB manufactures and develops products in accordance with FDA QSR 21 CFR Part 820 cGMP, CE IVD and ISO13485:2016 certifications.

418 Bioventus

212 Greystone Circle

Boerne, TX 78006

P (210) 739-2189

www.bioventus.com

TheraSkin is an all human split thickness allograft with living cells, endogenous growth factors and a native extracellular matrix. TheraSkin vascularizes to build granulation tissue and epithelialization to close Mohs wounds.

112 Bradley Product, Inc.

1700 W. 94th St.

Bloomington, MN 55431

P (952) 881-4130

www.bradleyproducts.com

Bradley Products is the leading manufacturer of Tissue Marking Dyes. Our products are simple to use, easily visible, and of the highest quality. We are a company dedicated to our customers and to provide the best service possible. Stop by our booth at ACMS/ASMH!

Exhibitor Listing

401 Castle Biosciences, Inc. (Gold Sponsor)

505 S. Friendswood Dr., Suite 201
Friendswood, TX 77546
P (866) 788-9007
www.castlebiosciences.com

Castle Biosciences is a leading diagnostics company that provides personalized, clinically actionable information to clinicians and patients to inform treatment decisions and improve health outcomes. The company is focused on transforming the disease management paradigm leveraging advanced technologies for its portfolio of innovative tests for skin cancers, uveal melanoma and Barrett's esophagus. (www.CastleTestInfo.com)

Non-CME Symposiums provided by Castle Biosciences, Inc.

Thursday, May 12, 2022
Time: 7:30 pm – 8:30 pm
Room: Franklin 4 | Exhibit Hall Franklin Hall
Details to follow.

Saturday, May 14, 2022
Time: 12:00 pm – 1:00 pm
Room: Franklin 4 | Exhibit Hall Franklin Hall
Details to follow.

413 Cobalt Medical Supply, Inc.

4 Haul Road
Wayne, NJ. 07470
P (551) 500-1165
www.cobaltmed.com

Cobalt Medical Supply is a provider of equipment, supplies, furniture, and pharmaceuticals for medical professionals nationwide. We work to lower costs and increase efficiency for our customers. Having experience with outfitting and installing dermatology practices, we consult and educate our clients, giving them the best opportunity to make informed decisions.

207 Corza Medical

247 Station Drive Suite NE1
Westwood, NJ 02090
P (973) 305-0730
www.corza.com

Corza Medical's mission is to champion surgeons with outstanding products and remarkable service, saving time, money and effort. We are a global provider of medical devices and biosurgery products serving the surgical community, distributors and OEM partners. Corza Medical is committed to an exceptional customer experience, high-quality products and outstanding value.

206 Designs For Vision, Inc.

4000 Veterans Memorial Highway
Bohemia NY, 11716
P (631) 585-3300
www.designsforvision.com

See the Visible Difference® with Designs for Vision's patented Panoramic Loupes. Panoramic Loupes provide unprecedented field of view (100% wider than Prismatic Loupes). The LED DayLite® HDi headlights utilize exclusive optical designs that provide 45% brighter illumination with even distribution

113 Elsevier, Inc.

1600 JFK Blvd. Suite 1600
Philadelphia, PA 19103
P (215) 239-3900
www.us.elsevierhealth.com

Elsevier is a world-leading provider of information solutions that enhance the performance of science health and technology professionals empowering them to make better decisions and deliver better care.

307 George Tiemann Surgical (Sponsor)

25 Plant Ave.
Hauppauge, NY 11788
P (800) 843-6266
www.georgetiemann.com

Tiemann will display a full line of surgical instruments and accessories for Mohs surgery. We are experts at assisting the Mohs surgeon assemble surgical trays.

313 Genentech

1 DNA Way
South San Francisco, CA 94080
P (650) 255-2169
www.gene.com

For more than 40 years, we've been following the science, seeking solutions to unmet medical needs. As a proud member of the Roche Group, we make medicines to treat patients with serious medical conditions.

114 GluStitch Inc.

7188 Progress Way Unit 307
Delta, British Columbia
V4G1M6, CANADA
P (604) 940-2262
www.dermglu.com

GluSeal cyanoacrylate tissue adhesive is an attractively priced, high quality alternative to the big name brands that are prohibitively expensive for private practices. GluSeal can help you save time, save money, improve your surgical outcomes, and leave your patients feeling satisfied with the minimum aftercare that is required. All without breaking the bank! With pricing as low as \$2.50/use, try GluSeal today and see what it can do for you, your patients, and your bottom line.

109 IMEB, Inc.

170 Vallecitos De Oro
San Marcos, CA 92069
P (760) 761-0836
www.imebinc.com

IMEB INC. Mohs Specialty supply and instrument company offering new and refurbished Olympus Microscopes, cryostats, small slide stainers, slide printers, fume hoods and all general supplies and chemicals and reagent for the Mohs procedure. IMEB INC has also created a self contained Mohs Mobil Laboratory Van for Mohs offices nation wide. Call or visit our booth at the ACMS conference in Philadelphia May 12, 2022 thru 15, 2022. Self contained Mobil Van with complete internal power supplies to run instrument 24 /7.

202 Johnson & Johnson NEUTROGENA®

199 Grandview Rd
Skillmann, NJ 08558
P (862) 222-7631
www.NeutrogenaMD.com

For more than 90 years, Neutrogena® has partnered with dermatologists and experts to continually elevate the science of skincare and deliver a breadth of new products and innovations that support your treatment guidance. Visit NeutrogenaMD.com – dedicated to dermatology professionals.

407 Kerecis LLC

2300 Clarendon Blvd. Suite 1210
Arlington, VA 22201
P (610) 416-2431
www.kerecis.com/

Kerecis Omega3 Wound is a fish-skin graft that is homologous to human skin and used for tissue regeneration. When grafted onto damaged human tissue, the fish-skin graft recruits the body's own cells, supporting the body's own ability to regenerate. The fish skin is a natural microbial barrier.

407 Medtronic

Operational Headquarters - Medtronic
710 Medtronic Parkway
Minneapolis, MN 55432
P (952) 221-7141
www.medtronic.com/covidien/en-us/products/wound-closure.html

At Medtronic, we are committed to remaining by your side by evolving with your changing needs so you can keep delivering the highest levels of patient care. Our comprehensive portfolio of effective wound closure solutions is for the full spectrum of general and specialty procedures.

213 Mercedes Scientific

12210 Rangeland Pkwy
Lakewood Ranch, FL 34211
P (800) 331-2716
www.MercedesScientific.com

Mercedes Scientific is a privately held and woman-owned medical and laboratory supply distributor located in Lakewood Ranch, FL. Since 1991, we have been dedicated to providing customers with competitive prices on quality products that we source both domestically and from around the world.

104 Micronix Systems Inc.

43 Commerce Street
Springfield, NJ 07081
P (973) 379-4400
www.micronixsystems.com

Since 1990 Micronix Systems has been supplying the microscopy needs of Mohs Surgeons throughout the USA and beyond. We look forward to demonstrating the latest in microscope ergonomics, digital imaging systems, and the customer service behind all of our microscope products. The team here at Micronix looks forward to seeing you!

300 Midmark Corporation

60 Vista Dr.
Versailles, OH 45380
P (800) 643-6275
www.midmark.com

Midmark Corporation is committed to providing innovative products and solutions to healthcare professionals around the world. Offering full lines of exam and procedures tables, as well as workstations, casework, instrument processing, digital diagnostic solutions and more. Midmark is focused on continuously improving physician workflows and enhancing patient-caregiver interactions.

106 Mikrosan

2764 Gateway Road Suite 100
Carlsbad, CA 92009
P (760) 893-8095
www.mikrosan.com

At Mikrosan, we provide telemicroscopy and digital pathology systems that help Mohs surgeons accelerate turn-around times and patient throughput, while easing case documentation and facilitating collaboration with sub-specialists and referrers.

Exhibitor Listing

203 MiMedx Group, Inc.

1775 W Oak Commons Ct
Marietta, GA 30062
P (770) 651-9126
www.mimedx.com

MiMedx® is an industry leader in advanced wound care and therapeutic biologics, distributing human placental tissue allografts with patent-protected processes. MiMedx processes human placental tissue utilizing its proprietary PURION® process methodology, to produce allografts by employing aseptic processing techniques such as terminal sterilization. MiMedx has supplied over 1.5 million allografts to date.

212 Modernizing Medicine

4850 T-Rex Ave Ste 200
Boca Raton, FL 33431
P (561) 880-2998 Ext. 1615
www.modmed.com/dermatology

At ModMed® we're transforming healthcare through intelligent dermatology-specific platforms that increase practice efficiency and improve patient outcomes. With our cloud-based electronic health record (EHR) and practice management (PM) system and our revenue cycle management (RCM) services we help dermatologists streamline workflows from clinical to financial to operational environments.

107 MTI

3655 Ninigret Dr.
Salt Lake City, UT 84093
P (801) 887-5114
www.mti.net

MTI designs, manufactures and sells the highest quality exam and procedure chairs, mobile medical cabinets, stools, procedure and exam lighting, and related accessories. Our exam/procedure chairs and equipment are specifically designed for Mohs Surgeons and Dermatologists. They are ADA compliant and come with SmartTech™ and ComfortSynch™ technology, providing superior patient safety and outcomes. The products are aesthetically pleasing with thin tapered back chairs and contoured bases for optimal patient access. They also feature a quick-change headrest options, and floating arms to maximize patient comfort.

310 Nextech

4221 W. Boy Scout Blvd. Suite 200
Tampa, FL 33607
P (303) 818-3868
www.nextech.com

Nextech improves the performance of specialty practices with innovative solutions and services that drive efficiency fuel growth increase profitability and enhance the patient care experience. Our industry leading EHR is tailored to the unique charting preferences of individual users and pairs perfectly with our comprehensive fully integrated Practice Management solution. To see why Nextech has been the number one choice for specialty practices for more than two decades visit www.nextech.com.

108 NovodiAx

3517 Breakwater Ave.
Hayward, CA 94545
P (510) 574-7325
www.novodiAx.com

We are dedicated to advancing tissue-based diagnostics and immunoassays. Our ihcdirect product line gives Mohs surgeons, surgical oncologists, and pathologists the diagnostic tools they need to provide better patient care and reduced healthcare costs.

319 Organogenesis

85 Dan Rd.
Canton, MA 02021
P (856) 466-0078
www.organogenesis.com

We are a biologics company working with dermatologists providing tissue matrix products to use after Mohs surgery when primary closure and skin grafts are not an option. Biological skin substitutes to support secondary intention healing with products that are natural and provide a better way to heal.

310 PathologyWatch

497 West 4800 South, Suite 201
Murray, UT 84123
P (801) 735-4735
www.pathologywatch.com

PathologyWatch is a digital pathology provider, helping clinics across the nation develop a more efficient pathology workflow.

210 Pinnacle Dermatology

5141 Virginia Way Suite 350
Brentwood, TN 37027
P (773) 575-1645
www.pinnacleskin.com

With 90+ locations in 11 states Pinnacle Dermatology is the largest multi-state female-founded and owned dermatology network in the U.S. Thanks to her vision for a dermatology model that provided higher standards of patient care Pinnacle Dermatology founder and fellowship-trained Mohs surgeon Dr. Paula Lapinski laid the foundation for who we are today.

Exhibitor Listing

301 Regeneron|Sanofi Genzyme (Platinum Sponsor)

777 Old Saw Mill River Road
Tarrytown, NY 10591
P (914) 847-3544
www.Libtayohcp.com

Regeneron is a leading science and technology company delivering life-transforming medicines for serious diseases. Founded by physician-scientists 30 years ago, our science-driven approach has resulted in six FDA-approved medicines and numerous product candidates in a range of diseases, including asthma, pain, cancer and infectious diseases. In addition to our medicines, our innovations include the VelociSuite® technologies, world-class manufacturing operations, one of the largest human genetics sequencing efforts in the world and rapid response technologies being used for global good.

Product Theater Luncheon provided by Regeneron|Sanofi Genzyme

Thursday, May 12, 2022
Time: 12:00 pm – 1:00 pm
Room: To be determined

Come discover a systemic treatment option for patients with advanced Cutaneous Squamous Cell Carcinoma (CSCC).

Cutaneous squamous cell carcinoma (CSCC) is one of the most common cancers worldwide and continues to increase in incidence. Advanced CSCC can be particularly aggressive and has historically had limited treatment options. Come learn about the mechanism of action, clinical efficacy and safety data, patient eligibility, and dosage and administration of an FDA approved treatment option for appropriate patients suffering from advanced CSCC.

414 Rushabh Instruments, LLC

25 Richard Road
Ivyland, PA 18974
P (267) 994-2241
www.qualityhistology.com

Rushabh Instruments, LLC designs and manufactures high quality medical laboratory equipment. We develop and manufacture products that are innovative, easy to use and work well in your work environment. Our Histology product line currently includes Tissue Embedding Center, H&E Slide Stainer, Frozen Section Stainer for Mohs Labs, Floatation Water Bath and Paraffin Dispenser. Our products are designed and built in Warrington, Pennsylvania, USA.

308 Safe n Simple

8112 Rosebud Ln.
Clarkston, MI
P (248) 214-4877
www.sns-medical.com

Simpurity wound care products by Safe n Simple offer high quality wound dressings at cost effective prices. Our products are user friendly with excellent healing rates and results. Look for our full line of products including Alginates Fibergels Collagens Silicones Foams Hydrogels and Xeroform dressings.

302 SurgiTel

77 Enterprise Drive
Ann Arbor, MI 48103
P (734) 546-0661
www.surgitel.com

SurgiTel's mission is to offer customers the best in vision, comfort and ergonomics. Our patented lightweight optics and LEDs, coupled with Oakley frames, means all-day-comfort for the clinician. SurgiTel's unmatched loupe declination angle means your body is in the correct ergonomic position, reducing pain and the risk of injury. Our loupe mounted SurgiCam Pro digital video camera and our PrismPro loupe line (5.5x-8.0x) can only be seen at SurgiTel.

114 Triad Life Sciences, Inc.

1770 Moriah Woods Blvd.
Memphis, TN 38117
P (901) 485-6333
www.triadls.com

Triad Life Sciences is an emerging regenerative medicine company with a ground-breaking technology platform engineered to address unmet clinical needs in complex surgical wounds, chronic stalled wounds, and burns.

417 U.S. Dermatology Partners

5310 Harvest Hill Rd.
Dallas, TX 75230
P (214) 420-0655
www.usderpartners.com

Practice Management/Physician Recruitment

315 Zero Gravity

940 Lincoln Rd. Ste 307
Miami Beach, FL 33139
P (704) 774-2577
www.zerogravityskin.com

“ZERO GRAVITY SKIN was founded with one goal in mind; to develop and deliver the safest and most effective pain management and anti-aging Medical devices to consumers across the globe. Zero Gravity is committed to produce the most effective LED (Light Emitting Diodes) light therapy for chronic pain and facial skin rejuvenation in the industry. The sophisticated technology behind InfraRed Light Therapy is supported by many leading board certified Dermatologists and Plastic Surgeons across the globe. Zero Gravity devices are FDA-Cleared Class 11 medical devices.”

Explore the clinical profile of LIBTAYO across a number of difficult-to-treat diseases

Visit LIBTAYOhcp.com to learn more



LIBTAYO[®]
(cemiplimab-rwlc)
Injection 350 mg

REGENERON | SANOFI GENZYME 

Save the Date



Seattle 2023



29TH ANNUAL MEETING  MAY 5–6 HYATT REGENCY SEATTLE



555 East Wells Street, Suite 1100
Milwaukee, WI 53202
Phone: (414) 918-9813 • Fax: (414) 276-3349
Email: info@mohstech.org • Website: www.mohstech.org