

CHANNELING YOUR INNER MOHS-GYVER

Adapt/React/Fix
Debra Keith (HT)ASCP

No Disclosure of Relevant Relationships with Industry

MOHS TECHNICIANS...

PART MACGYVER... PART YODA.

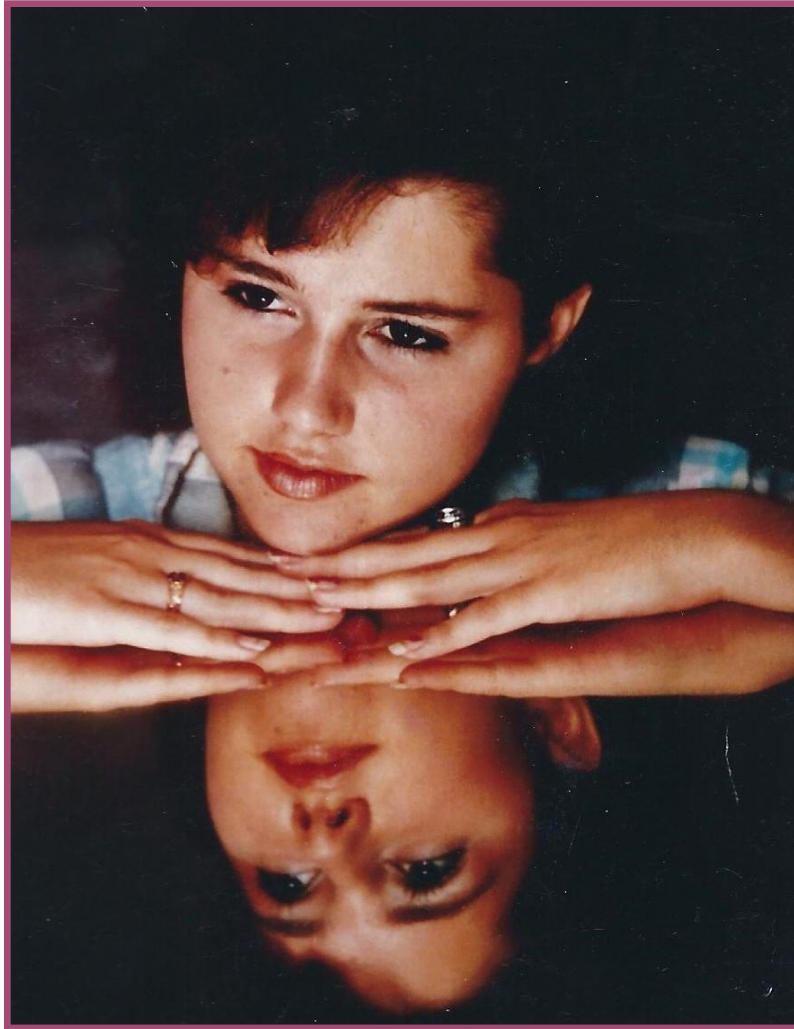
- ◉ We have to channel the “fixer” part of our personality... while not getting overwhelmed by incoming specimens that can challenge.
- ◉ Find your inner Yoda... and channel your MohsGyver.
- ◉ Harmony achieved. 😊

MOST COMMON OBSTACLES

- ◉ Fat
- ◉ Cartilage
- ◉ Relaxing section
- ◉ Getting complete epidermis
- ◉ Mixed density specimens (HAIR and FAT!?) 😊
- ◉ Getting overwhelmed when specimens come fast. 😞
 - This is where we channel our inner Yoda...

WHERE IS THE MACGYVER MULLET?

Take it in....

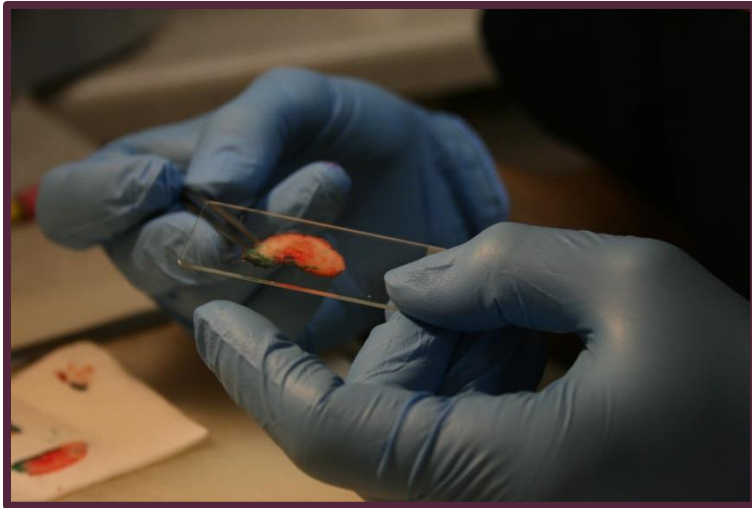


Oh.... The 80's

EMBEDDING METHODS

- ◉ Slide Technique
 - Try using poster frame plexiglas
- ◉ Straight onto blade holder
 - Perfect heat sink!
- ◉ Commercially available embedding systems
 - Made by the finest Mohs-Gyvers!
- ◉ “L” method
 - My method of choice...

SLIDE TECHNIQUE



This was my preferred method for years.



Cut the Plexiglas into small pieces...
VIOLA!

MY “L” SYSTEM



Yes... Hex keys. MOHSGYVER!



THEN... I got fancy. 😊

FINAL EMBEDDED CHUCK



Minimal OCT...

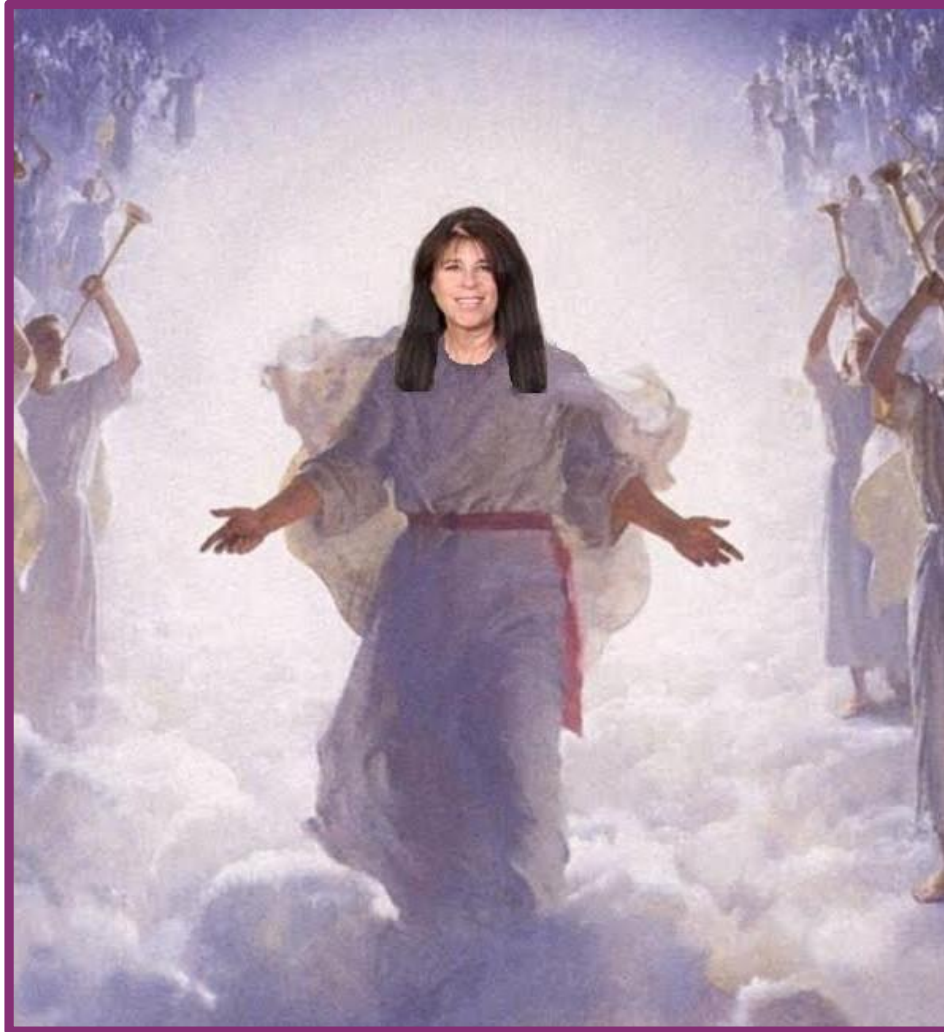
Maximum MohsGyver!

OH NO! I HAVE A LARGE PIECE OF
TISSUE WITHOUT EPIDERMIS
ATTACHED! EMBEDDING THIS WILL
BE A NIGHTMARE!!!

◉ WHAT WILL I DO!?!?!?!?!?!?

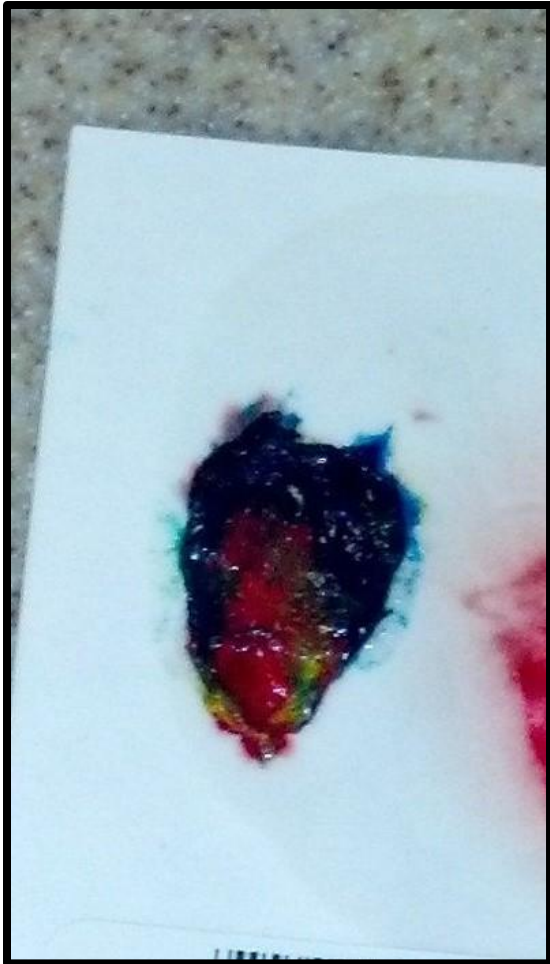
THIS IS WHEN I ASK MYSELF...

WHAT WOULD MO DO?

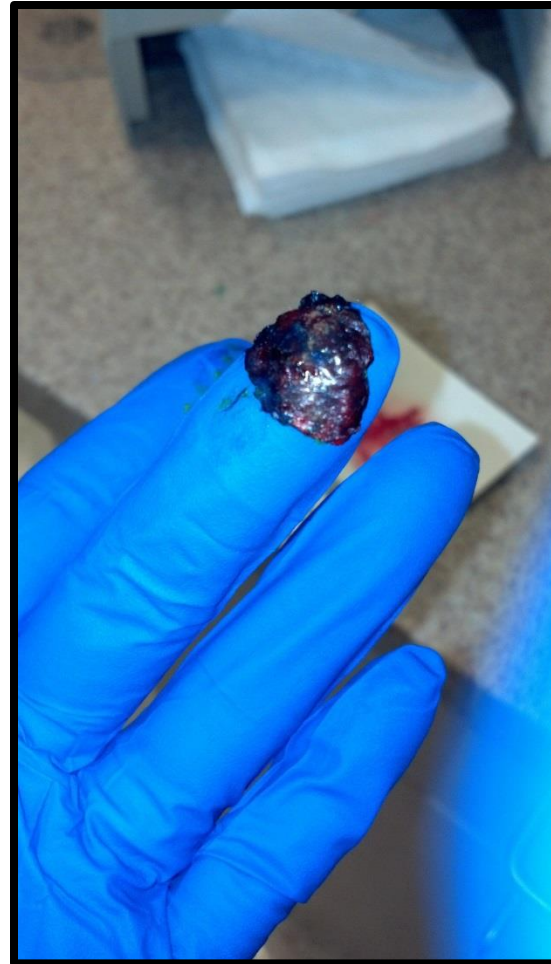


PERIOSTEUM

”FINGER-ROLL TECHNIQUE”

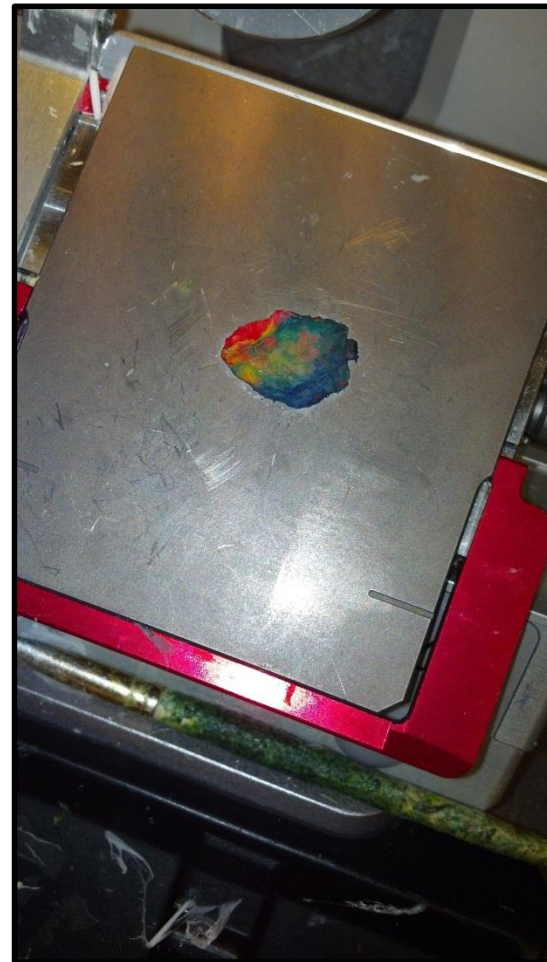
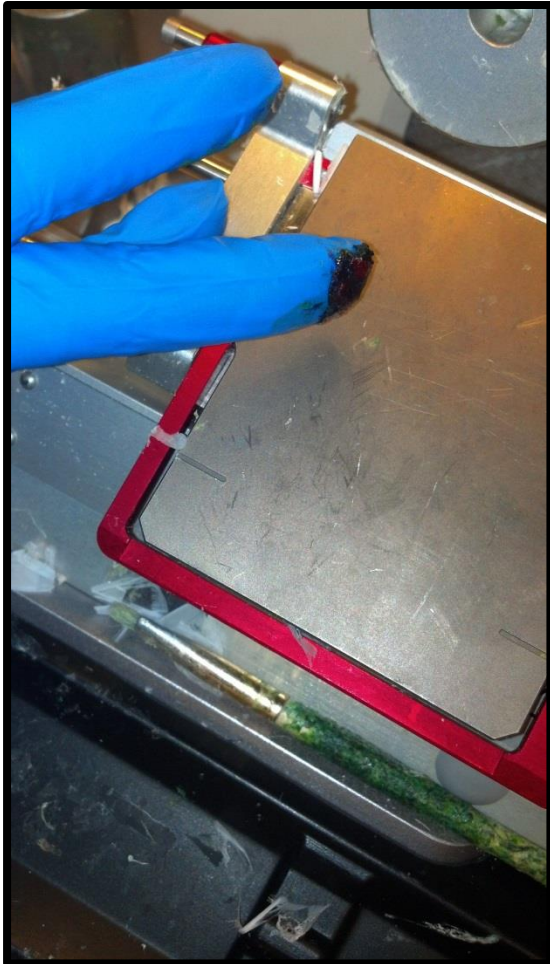


Large deep specimen
without epidermis



Apply the tissue to your finger...

ROLL TISSUE ONTO EMBEDDING PLATFORM OF CHOICE AND EMBED
AS YOU USUALLY WOULD.



PERIOSTEUM PERFECTION



WHAT IT FEELS LIKE WHEN YOU
MAKE A PERFECT SLIDE FROM
SNOT...



Angels are singing....

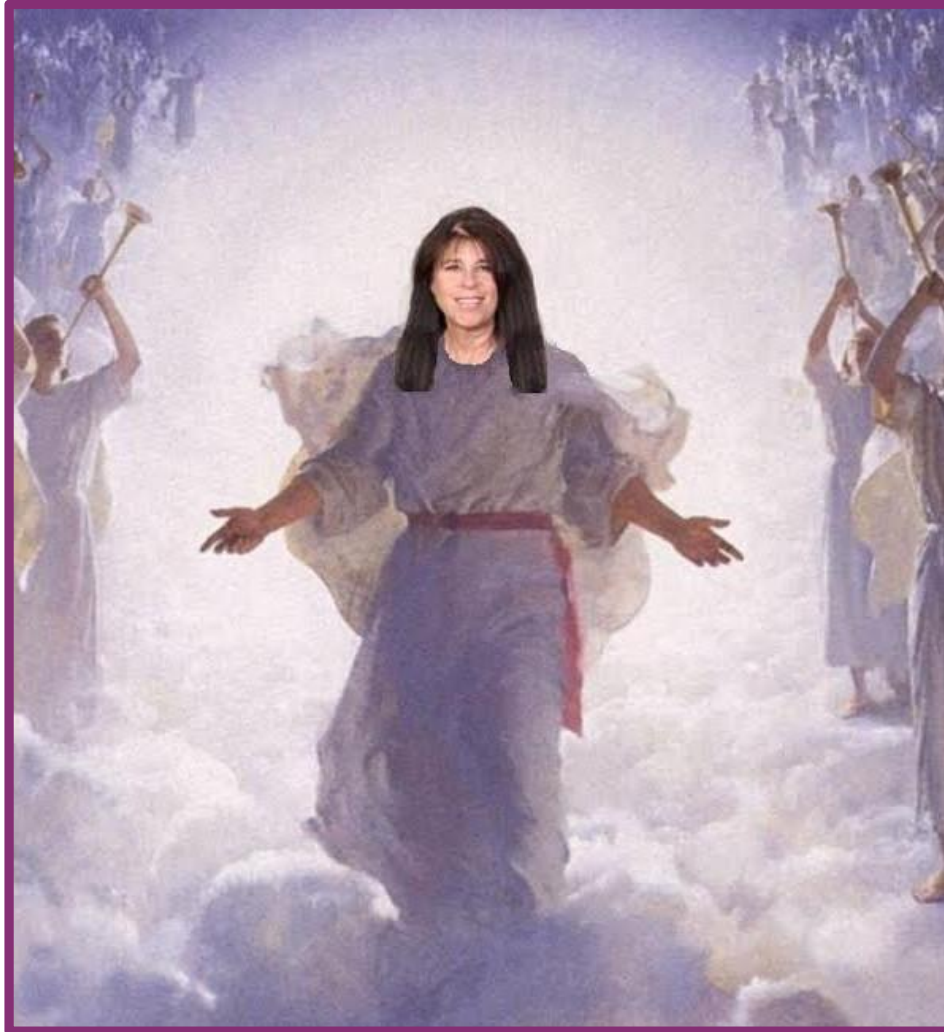
UGH!!!! I HAVE A FATTY PIECE OF
TISSUE WITH TIGHT EPIDERMIS.
HOW WILL I GET THE EPI TO LAY
DOWN?

○ What will I do!?

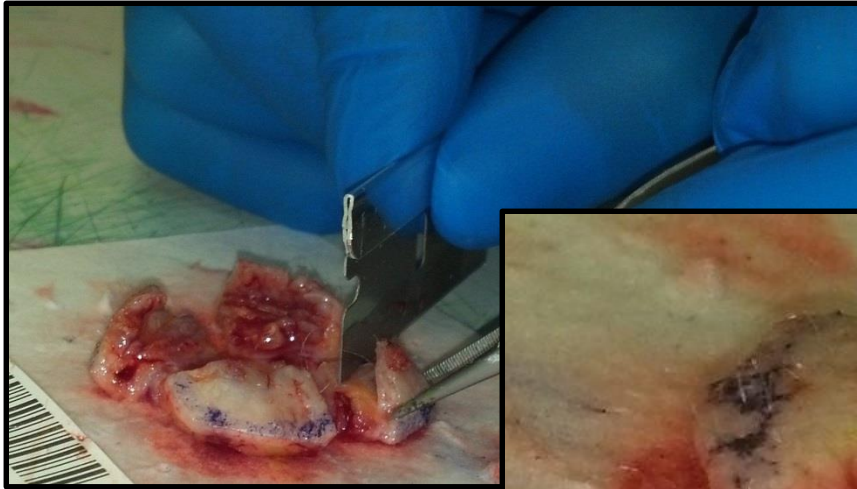
THIS IS WHEN I ASK MYSELF....

© WWMD?

WHAT WOULD MO DO?



“TACO TECHNIQUE”



HOW YOU FEEL WHEN YOU HAVE PERFECT EPI!



Angels are singing....

FAT!!!! IT IS SO CHUBBY!!!!!!

◎WHAT... will I DO!?

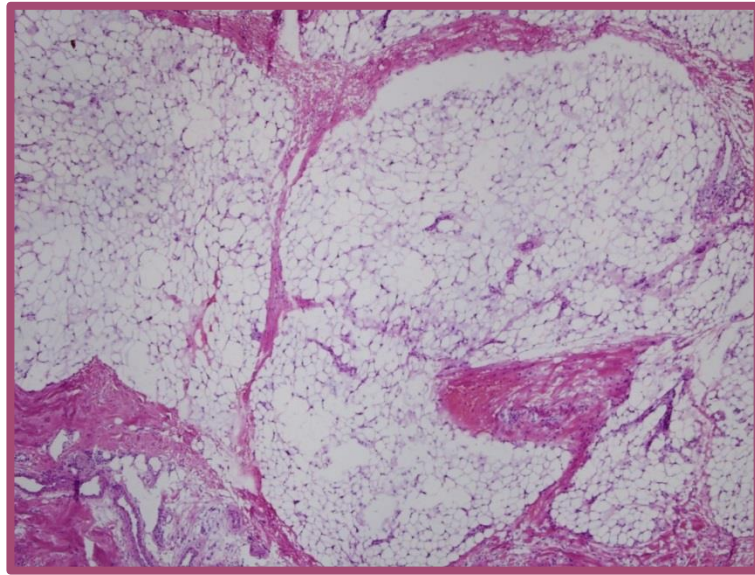
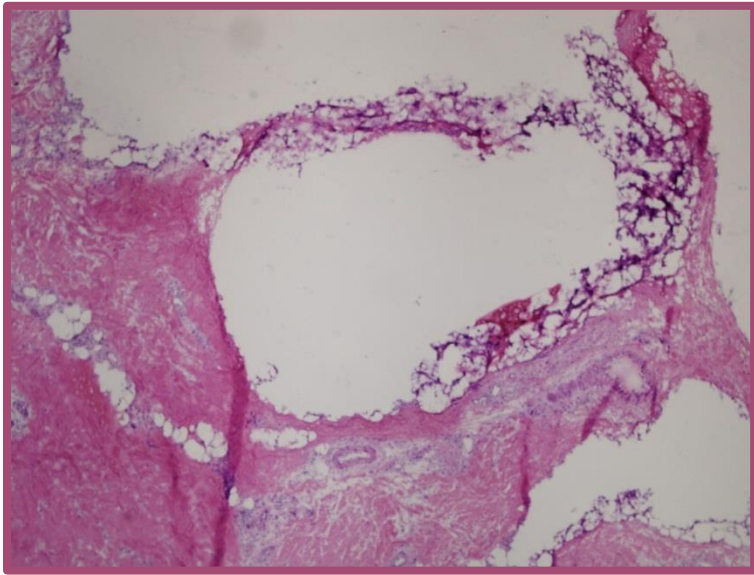
THIS IS WHEN I ASK MYSELF....

© WWMD?

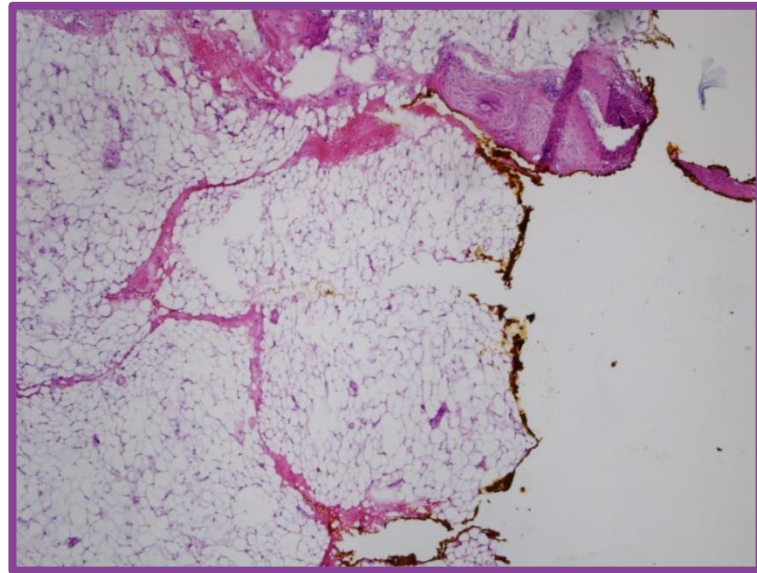
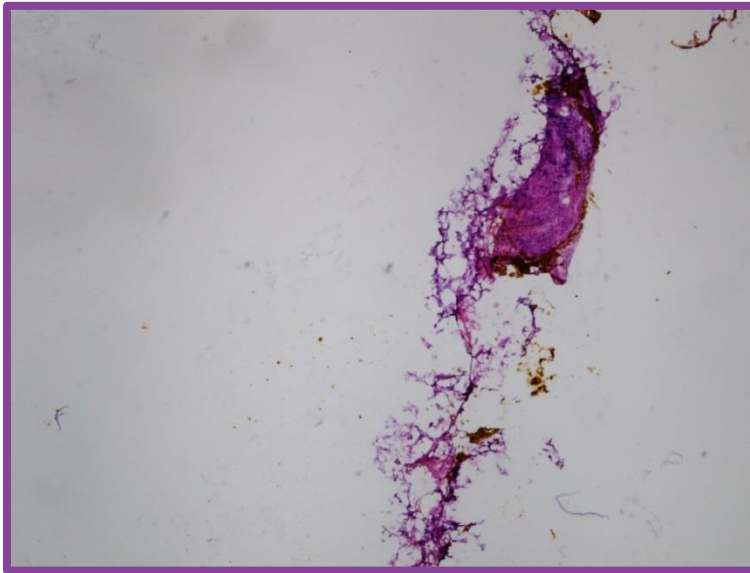
WHAT WOULD MO DO?



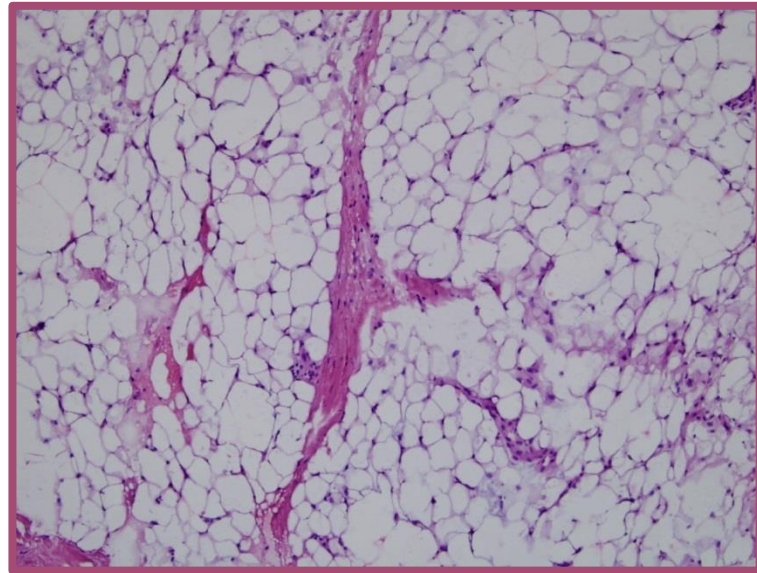
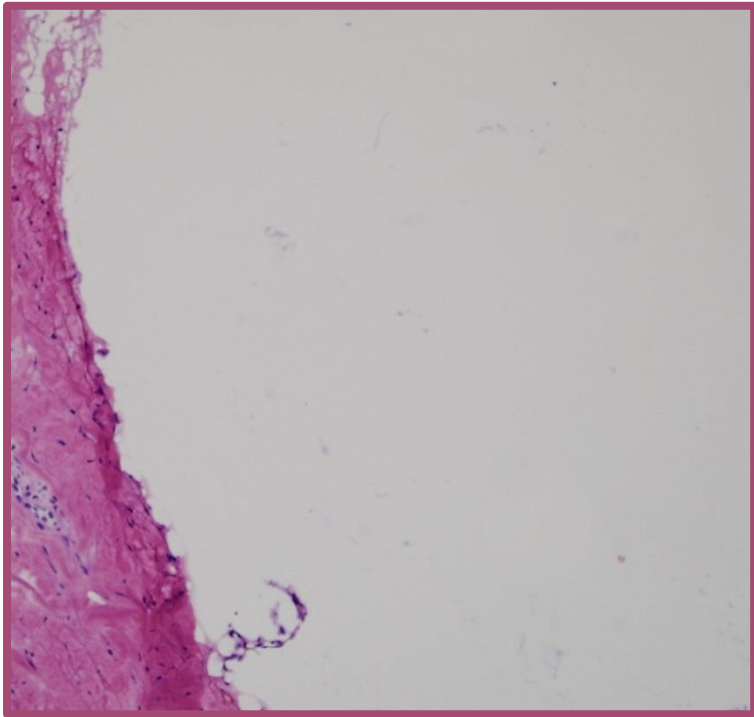
LIQUID NITROGEN



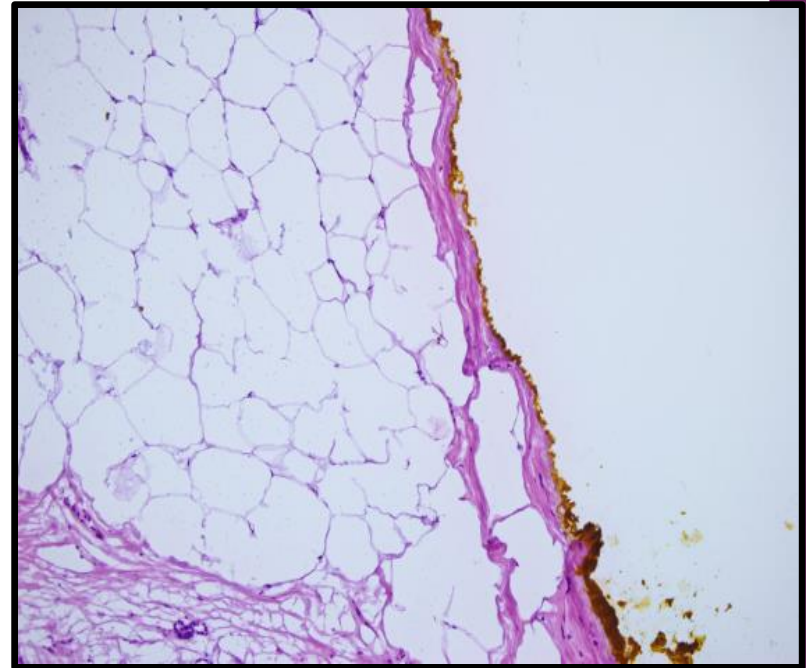
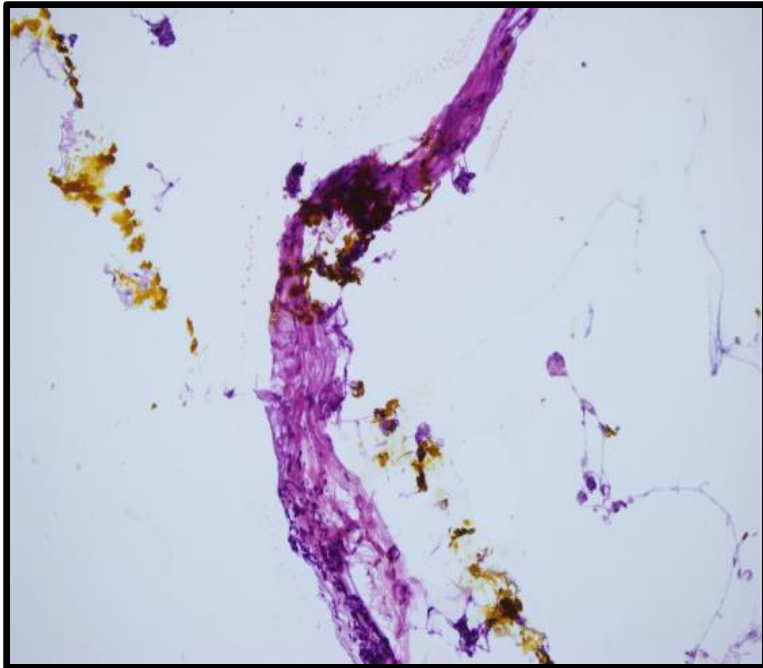
SAME MARGIN USING LIQUID NITROGEN



SAME TISSUE WITH/WITHOUT LIN



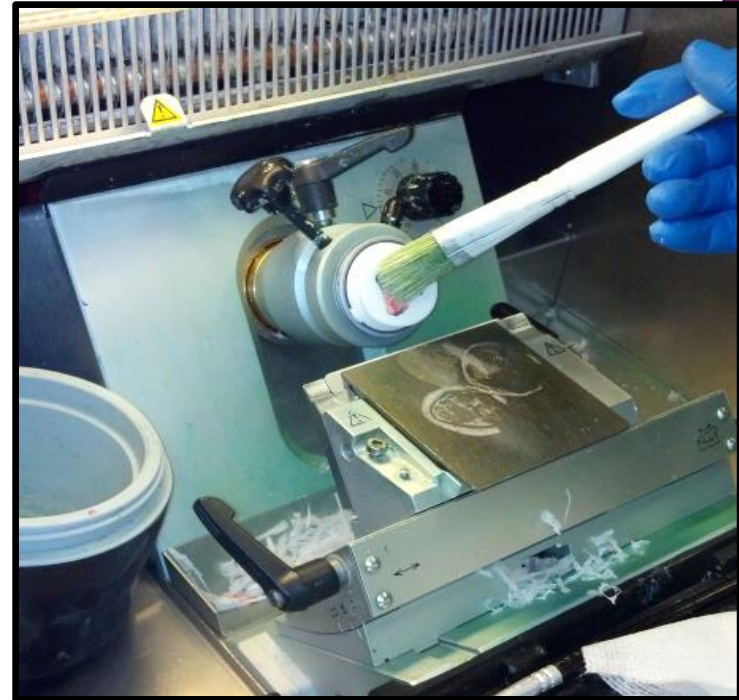
SAME MARGIN WITH/WITHOUT LIN



BRUSH ON LIQUID NITROGEN



I use a Styrofoam cup



Move the blade OFTEN...
It will dull faster with the
Increased hardness....

Be more patient than you have EVER been....

I DID NOT USE THIS FOR THE FIRST MANY YEARS! I WAS TOO IMPATIENT!

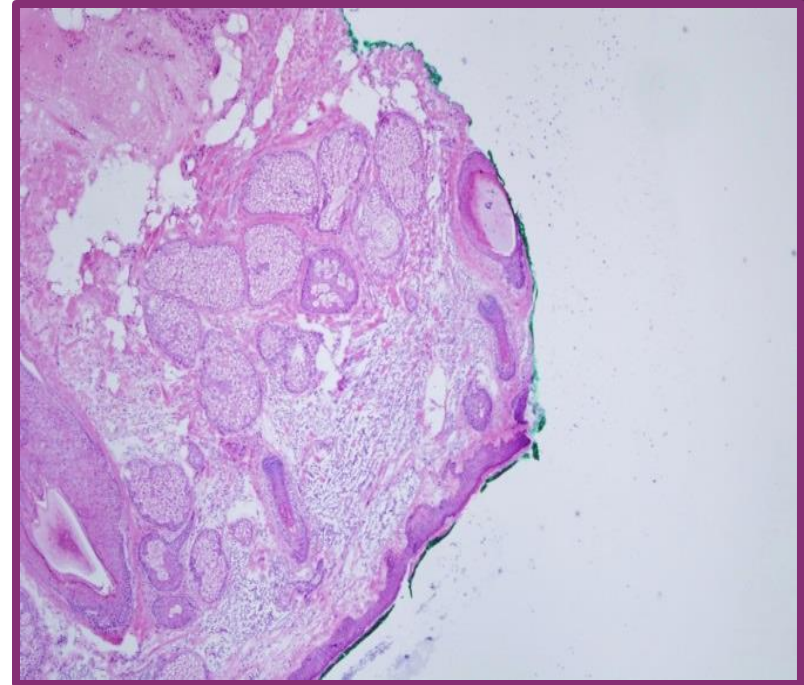
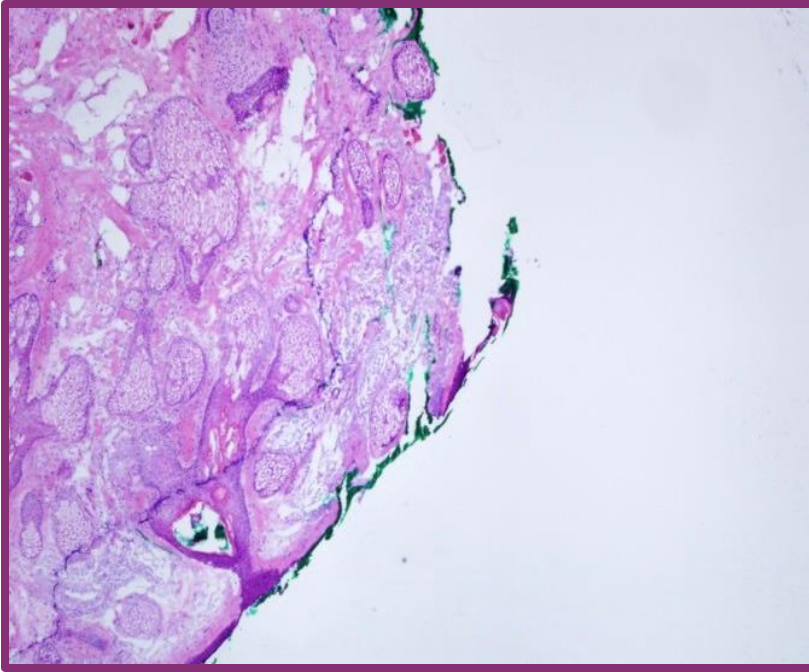
- ⦿ Again... be more patient than you have ever been. Be... Yoda.
- ⦿ It will seem impossible. It isn't... 😊
- ⦿ Move your blade often (every section, even).
- ⦿ Apply liquid nitrogen until the fat seems opaque.
- ⦿ Try to concentrate the liquid nitrogen on the fatty areas and avoid the denser tissue.
 - If you freeze follicles too much... hair cuts like building nails. ☹️

WHAT IT FEELS LIKE WHEN YOU MASTER THE TECHNIQUE...



Angels are singing.....

INTRA-CRYOTOMY MICROSCOPIC QA



It is easy to tell when your epidermis is incomplete on a stained slide...
Have you ever used the scope to check WHILE you are cutting?

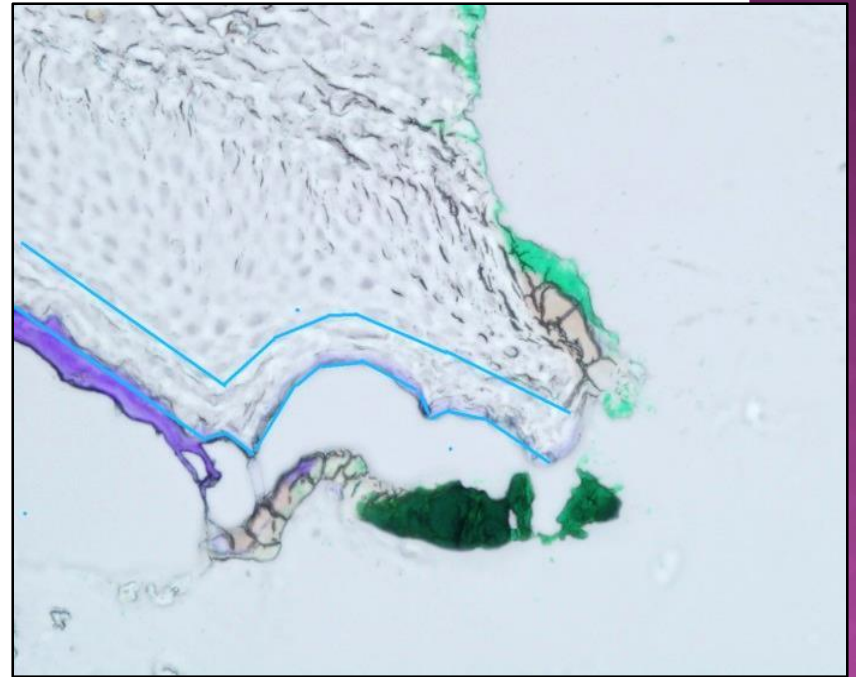
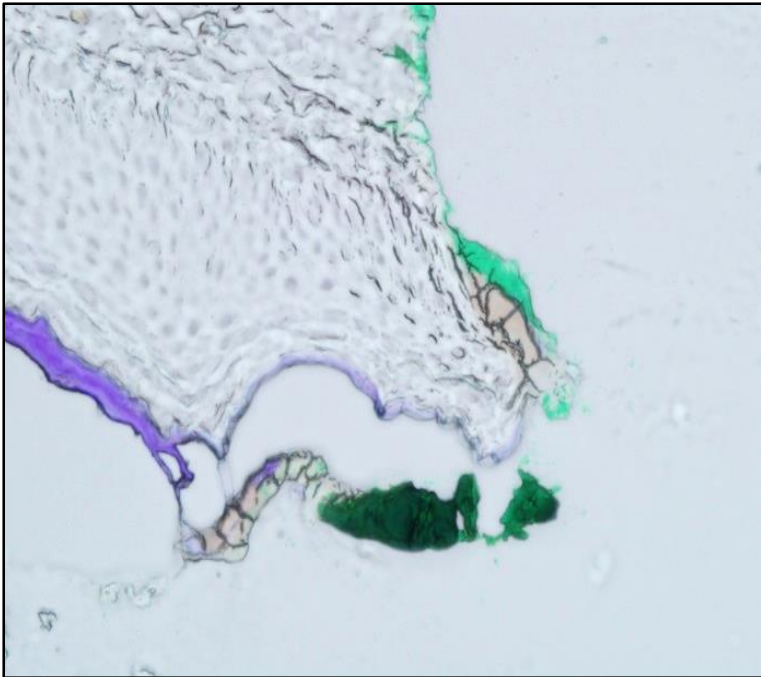
BENEFITS TO LOOKING AT UNSTAINED SECTIONS WHILE CUTTING

- ◉ Reduction in recuts
- ◉ Increased confidence
- ◉ Reduction in overall slides
- ◉ Real-time QC

EPIDERMIS



COMPLETE UNSTAINED SECTION



WHAT IT FEELS LIKE WHEN YOU MASTER THE TECHNIQUE...



Angels are singing.....

SUMMARY

- ◉ Find the techniques that work for you.
- ◉ Try to be open to learning from others.
- ◉ Be Yoda... while channeling your MohsGyver.
- ◉ See the beauty in all that we see/do in the lab. It's a magical place.

THANK YOU SO MUCH!! 😊

QUESTIONS?

◉ Keith.debra@mayo.edu